

MISGA HISTORY

1975-1995

Viewing Tips

For the best viewing experience, it is recommended that you:

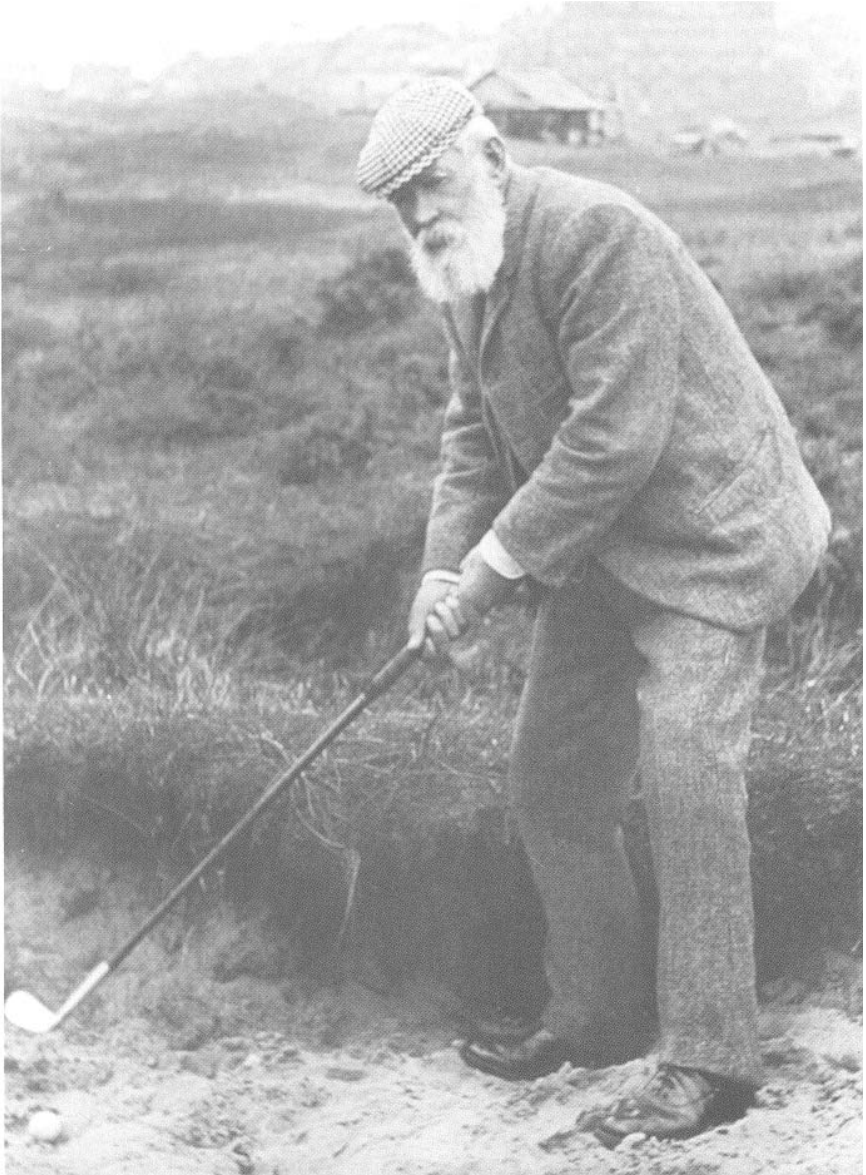
1. Download the History document entirely. The document will open in Acrobat Reader within your browser.
2. Save it to your local drive (click the floppy disk icon) with a file name and folder location that you specify.
3. Close your browser; go off-line if you like.
4. Open the saved file in Acrobat Reader, or preferably, Adobe Reader 6.0 (free download at www.adobe.com)
5. This document has an attached file, "Presidents' Pictures," which is accessible through a Bookmark of the same name. Follow the instructions to view the pictures and then to return to the History document.
6. The document opens to the page you are currently viewing (this page). The Bookmark palette is open; the document view is "fit width" and "continuous."
7. Click the maximize icon (in the upper right corner, just left of the X) so that your full screen is used for viewing.
8. Use the Bookmark palette as your preferred navigation technique.
9. Explore the various viewing options and other Adobe features.

Although one can view the document in Acrobat within the browser, more features and screen space are available when one follows these suggestions.

Blank Page

MISGA HISTORY

1975-1995



St. Andrews – MISGA – Tom Morris

St. Andrews - MISGA - Tom Morris

In May 1754 twenty-two noblemen who admired “*the ancient and healthful exercise of golf*” formed “**The Society of St. Andrews Golfers.**”

Little did they realize that in 1754, two hundred and twenty years later, a group of senior golfers from eight clubs in the suburbs of the U.S. Capital – with much the same purpose in mind – would meet at Kenwood’s Golf & Country Club to lay the foundation for MISGA (Maryland Interclub Seniors Golf Association). A founders’ meeting later, on February 24th, 1976 made that purpose a reality.

St. Andrews and St. Andrews Old Course are thought of in one breath. Over the years, the game’s legends have played its challenging links. One man – **Tom Morris** – is the key legendary figure. He, more than any other, symbolizes St. Andrews and is an inspiration to all senior golfers. His forty-four years of service as a grand old man of golf earned him worldwide respect.

MISGA DEDICATES THIS HISTORY TO Tom Morris.

Who was **Tom Morris**? He was one of St. Andrews first club professionals. Mr. Morris played in every British Open until he was age 75 and he was Open Champion in 1861, 62, 64 and 67. Tom died in 1908 at the age of 87.

The cover picture was obtained from Rod Thompson, Kenwood’s Pro in cooperation with Bill Duff, Golf Specialties of Scotland.

INTRODUCTION

On July 14, 1992 the Board of Directors at a meeting at Kenwood under the Presidency of Fred Shaffer authorized the Historian, Ray Keany, to form a committee to assist in the updating of the history of MISGA. The Board approved the following members in 1993: Chairman, Ray Keany, Kenwood; Co-Chairman, Claude Widerman, Montgomery; Member, Div. I, John Turner, Green Hill; Member, Div. II, Fred Shaffer, VFW; Member & Editor, Div. III, Merle Shumaker, Crofton; Member, Div. IV, Bill Hulihan, Montgomery Village.

Many Associates have assisted this work. First the Committee listed above who were all involved in writing and proof reading the History. Dick Bevan, Doug Moats, Otis Jefferson and George Meyer who were President of MISGA during its preparation, thus being an ex-officio member of the Committee. Sam Hastings of Argyle who prepared Appendix H. George Shenk Sr. of Navy who became our printing and technical adviser. And many other Associates who offered suggestions and advice.

Many thanks to all the Club Reps for writing and updating your individual Club Histories.

Having a complete copy of all Board minutes and all MISGA-grams made my job easy as compared to Ted's job of interviewing charter members to get his information. It was a great honor for me to have been chosen to be editor of this History. I was glad to contribute a little to the great organization that our charter members founded.

A handwritten signature in cursive script that reads "Merle Shumaker". The ink is dark and the handwriting is fluid and legible.

Merle L. Shumaker

“Lest We Forget”

They’re now playing greener fairways

This page is respectfully dedicated
to the MISGA members
who have given their
time, their service,
their all and now
reap their
reward.



“I expect to pass through
the World but once.
Any good therefore, that I can do
or any kindness that I can show
to any one fellow creature
let me do it now.
Let me not defer or neglect it,
for I shall not pass this way again.”
Thomas Bowden

MISGA Associates,

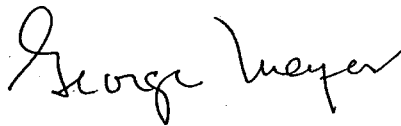
Three years ago the MISGA membership authorized the Board of Directors to undertake an up-date of the history of our organization. You further agreed to a dues increase to cover the cost of this effort. At the anniversary of our twentieth year this Herculean task has been accomplished.

Through the efforts of the History Committee, chaired by Ray Keany, after having spent an untold number of hours in compiling, writing, editing and some begging to get information you have in your hands the story of one of golf's fine organizations.

From a handful of Clubs in 1976 we have grown to 50 Clubs in 1996, with more than 4,450 members, reaching into 4 states and enlisting hundreds of volunteer leaders. These leaders in each club, on the Board, and on committees, have dedicated their time and talents because they believe in our basic concepts of good sportsmanship, great fellowship, and challenging golf for senior members.

As you read our history, we hope you will feel and understand the dedication of past leaders - past Presidents, Board members, Club Representatives and others. If we can build upon the legacy of the first twenty years with the same enthusiasm the next twenty will be even greater.

Our sincere appreciation to Ray Keany, his committee, and the others who compiled the material for this volume. Thank you one and all for a job superbly done.

A handwritten signature in cursive script that reads "George Meyer". The signature is written in black ink and is positioned centrally on the page.

Otis Jefferson
President 1995

George Meyer
President 1996

(Blank Page)



Double-Click the Paper Clip to view the Presidents' pictures. Then, to return to MISGA History, hit Alt+Left Arrow or Click Previous View icon.

Table of Contents

SECTION I

The History of MISGA..... 1

SECTION II

Organization and Operations of MISGA 15

SECTION III

History of Individual Member Clubs..... 31

APPENDICES

A	MISGA Charter Clubs and Representatives.....	78
B	MISGA Officers and Board Members 1976-1995.....	79
C	MISGA Annual Tournaments, Host Clubs, and Champions.....	88
D	Member Clubs and Dates Joined MISGA	89
E	Date and Location of MISGA Spring Flings.....	90
F	MISGA Annual Meetings of Club Representatives.	91
G	Guidelines for MISGA Club Representatives.	92
H	MISGA Out-of-State Events.....	95

(Blank Page)

SECTION I

The History of MISGA

The Founding and Early Days of MISGA

Each year more than 4,400 men enjoy playing in hundreds of Mixers at 50 golf clubs under the umbrella of the Maryland Interclub Seniors Golf Association (MISGA). Yet, As recently as 1975 this was just a vague idea germinating in the fertile minds of but a handful of people.

Remember 1975? It wasn't the best of times. Marvin Mandell was governor of Maryland; Gerald Ford had succeeded Richard Nixon in the White House; the country was still reeling from the trauma of Watergate. Recession stalked the land with unemployment topping 9 percent. World population was nearing 4 billion people and the cold war seemed to be getting hotter by the day.

To make matters worse, the Washington Redskins, who had posted a passable season's record of 10 wins and 4 losses under quarterback Sonny Jurgensen, crumbled and lost in the playoffs.

Still, there were some bright spots. The U.S. team won the Ryder Cup, Tom Watson won the British Open and Jack Nicklaus was taking trophies at golf courses across the land, including the Masters and the PGA Championship.

The brightest spot of all for Maryland golfers, however (even though few could have realized it at the time) had to be the beginnings of MISGA.

MISGA was conceived in the early Fall of 1975 and became a reality at its founding meeting on February 24, 1976. The concept of MISGA really began several years earlier when Kenwood Golf and Country Club and Lakewood Country Club held a home-and-away Mixer between the two clubs. This became a popular annual event. By 1975, the experience gained led the two clubs to develop and follow many of the precepts basic to MISGA today, such as:

- Waiver of greens fees
- Non-competitive format with the home club members acting as hosts to the visitors and,
- A strong emphasis on Interclub fellowship in golf.

The success of the Kenwood-Lakewood Mixers inevitably led to expanding the play by these two clubs to other clubs in the area. The final step was someone envisioning an association to promote the type of program, which had proven so popular at Kenwood and Lakewood.

That someone was Alvin T. “Al” Hagen, Chairman of the Senior Golf Committee at Lakewood Country Club. The first step was to arrange an informal meeting at Kenwood Golf & Country Club to discuss senior golf activities. In addition to representatives from Kenwood, there were representatives from Lakewood, Bethesda, Potomac Valley (now a public course), Manor and Montgomery Country Clubs. From the ensuing discussion, it was apparent that the participants favored an association of some sort, that they were enthusiastic about the Mixer format rather than interclub competition and felt that the concept would be acceptable to their respective club managements.

The next major step occurred on January 20, 1976. At a meeting at Lakewood CC, representatives of senior golf at more than twenty local Country Clubs met to discuss home-and-away Mixers, guest reciprocity and other items of mutual interest.

The enthusiasm shown at this meeting led to a second meeting on February 24, 1976 again at Lakewood CC. At this meeting a new senior golf association was formed. It took the name of Seniors Golf Association of Suburban Maryland. This name was changed to its present title at a meeting of the Board of Directors on May 14, 1976. A list of the clubs and their representatives at the founding meeting is given in Appendix A.

At a meeting of the founding clubs on March 2, 1976, officers and a Board of Directors were elected (see Appendix B) and By-Laws and Regulations were adopted. MISGA was in business.

Four objectives were established for 1976. These were:

- Establish a Mixer schedule.
- Establish an organization together with policies, rules and operating procedures.
- Find means to finance MISGA.
- Arrange the first Annual Tournament.

A Mixer schedule was arranged and eleven of the twelve founding clubs played a total of 44 Mixers in 1976. Only eleven took part because Congressional CC was unable to get management's approval in 1976. It later dropped out of MISGA largely because of pressures for time stemming from its commitment to the Kemper Open. Argyle CC participated in a few Mixers late in 1976.

The first Annual Tournament was held at the Potomac Valley Country Club on September 24, 1976 with the first Annual Banquet at the club following the Tournament. A list of Annual Tournaments with host clubs and team champions by year will be found in Appendix C.

With the foundation well established, the Board of Directors went on to establish and publish Mixer guidelines, have a MISGA logo designed and purchase bag tags and stationery incorporating the logo. Plans and objectives for expansion were developed. The first annual Spring Fling was arranged for the week of March 27, 1977 at Myrtle Beach, SC.

Financing MISGA turned out to be a tougher problem. It would be several years before a truly sound financing system would be attained. Income for the year came from a \$10.00 annual fee charged to each member club, as well as ten percent of the prize money at each Mixer. This was forwarded to the Treasurer by the host club. MISGA paid its bills in 1976 with a treasury balance of about \$100.00.

The first year was exciting and productive for MISGA. It had weathered the early days, a sound organization had been built, plans had been laid for expansion and a number of MISGA tradi-

tions such as the Annual Meeting, the Annual Tournament and the Spring Fling had been started. Truly a good year's work.

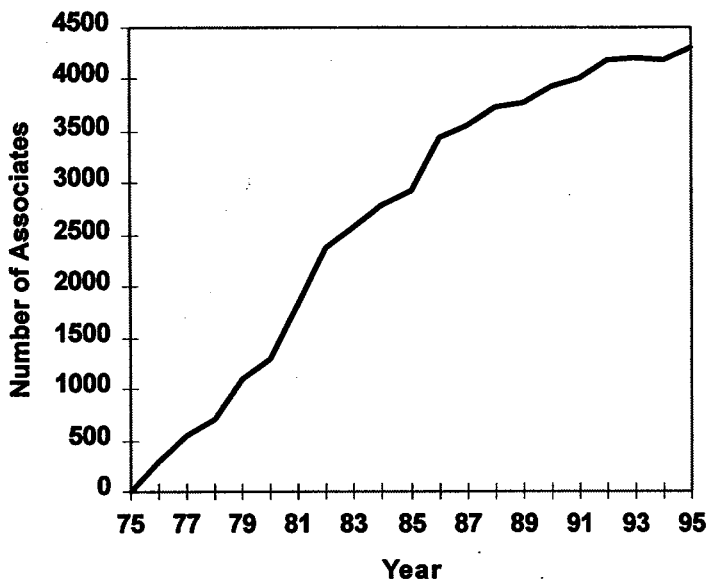
The Middle Years-Expansion and Growth of MISGA

Organizational and managerial efforts continued in 1977. MISGA was incorporated as a non-profit organization under the laws of Maryland that year. A new Constitution and By-Laws were written as part of the articles of incorporation. These were adopted by the Board on February 3, 1977. In November of 1977, a newsletter was approved. The first issue of the MISGAGram was published in May of 1988 by editor Ted Hayward. The MISGAGram is now sent individually to each Associate of MISGA.

The major activity in 1977, however, was expansion. Twelve new clubs joined MISGA that year. Participation in MISGA by clubs from Maryland's Eastern Shore, also, began in 1977. It is interesting to note that six of the new clubs were from there. They were: Cambridge CC, Caroline CC, Elks CC, Green Hill Yacht & CC, Nassawango CC and Talbot CC. MISGA gained not only association with these fine golf clubs but, also, the participation of talented and dedicated men such as Ed Maguire, Allen Eckel, Ed Schmidt and many others who contributed much to the betterment of MISGA.

This expansionist spirit continued during the next several years. By 1981 fourteen more clubs had joined MISGA, six of them from the Eastern Shore. A list of the member clubs and their date of joining is given in Appendix D. The number of MISGA associates in 1981 was about 1900, an increase of 1600 in five years. A graph showing the growth of MISGA since its inception through 1995 is shown below.

Number of MISGA Associates by Year 1976-1995



In 1979, the Board of Directors established the fiscal year as beginning on October 1 and closing on September 30. This was changed by the Board in 1995 to run from January 1 to December 31. A major improvement took place on August 16, 1979. Joe Gambatese and John McManus had been asked by the Board to look into the Associations finances. After careful study they concluded and recommended to the Board that each Associate be charged annual dues and that he be issued a wallet-size identification card.

The plan was adopted by the Board. It was implemented in the Spring of 1980 with the dues set at \$1.50 per individual. At the same time, the annual dues for each club were raised to \$25.00. The practice of remitting 10% of each Mixer's prize money was then discontinued. This procedure solved the problem of financing MISGA. An added advantage was that it made it possible to know

how many Associates there were and who they were. This procedure is still followed although the dues assessed have changed. As a result, The Association was able to set aside a \$5,000.00 contingency fund to be used in the event that a major tournament was rained out leaving non-cancelable debts for carts, food and other costs.

Some major organizational changes were initiated in 1980. Until this time, the presidency of MISGA had been held for five successive years by its founder, Al Hagen. This gave continuity during its formative years and MISGA needed the drive, the dedication and foresight, which Al supplied so abundantly.

There are, however, potential dangers in such a practice. It can stifle the emergence of other capable leaders; it may suppress innovative ideas; it can give individual members a feeling that they have no voice in selecting the leadership of their organization. All of this was understood by members of the Board, by many of the Associates and by Al himself who initiated numerous discussions to explore the problem and to weigh possible solutions.

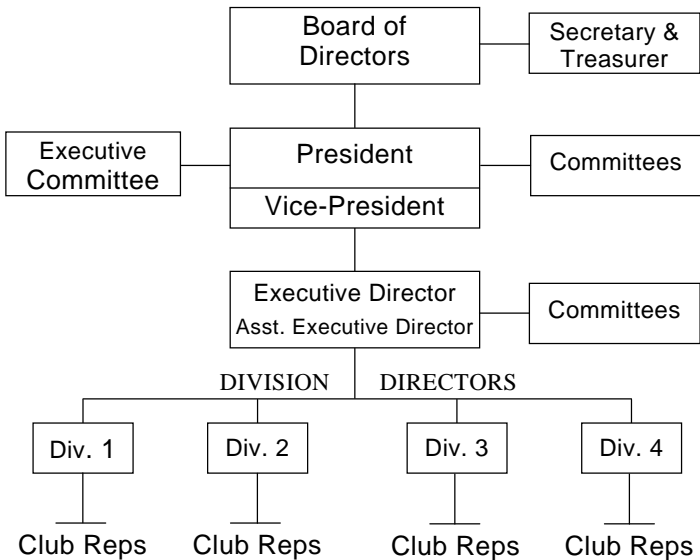
The Long Range Planning Committee, then chaired by Ed Schmidt, recommended to the Board on July 15, 1980 that an Executive Director position be created, the incumbent to be appointed by the Board. The President and the Board would establish policies and be the sole authority for the expenditure of funds. The Executive Director would supervise day-to-day operations under guidelines and policies laid down by the Board and would be accountable to the Board. Al Hagen would be appointed Executive Director to maintain continuity while the President would be elected.

At the same time the Board was aware that the growth of MISGA was raising new managerial and communication problems. For example, MISGA had gotten too large to hold an Annual Tournament, which would accommodate all who wanted to participate. A possible answer was to establish a number of Divisions, each to be headed by a Director who would be a member of the Board. The Directors would be autonomous in certain specific areas. Thus, each Division Director could have a qualifying tournament to se-

lect entries for the Annual Tournament while the President and the Tournament Committee could concentrate on the tournament itself. Scheduling of Mixers, participation in special events and much routine management would be carried out by the Division Directors.

MISGA operated for most of 1981 with seven Division Directors. This proved unwieldy and the matter was given to the Plans and Policy Committee (successor to the Long Range Planning Committee), chaired by Sam Hastings, for study and recommendations. The Committee recommended an organization of four Divisions to the Board at a meeting at Brooke Manor on August 6, 1981. It was recommended that the new organization be given a trial period from October 1, 1981 to September 30, 1982. The plan was adopted by the Board. A series of waivers and exemptions to the Constitution and By-Laws, effective for one year, were passed to make operation under the new organization possible.

MISGA Organization Chart for the Period Oct. 1981-Sept. 1984



Committees reporting to the President from 1981 - 1984 were: Plans and Policy, New Club Membership and Audit. Committees reporting to the Executive Director were: Tournaments, Associates and Communications (including MISG Agram)

Division Directors and Member Clubs – 1981

Division I - Eastern Shore	Division II - Western
Ed Maguire, Director	Maryland
	Mel Gesell, Director

Cambridge	Beaver Creek
Caroline	Eaglehead
Chester River	Holly Hills
Elks	Hunt Valley
Green Hill	Piney Branch
Nassawango	Rolling Road
Ocean City	Sparrows Point
Ocean Pines	V.F.W. (Frederick)
Seaford	
Shawnee	
Talbot	

Division Directors and Member Clubs – 1981

Division III - Washington	Division IV - Washington
East	West
Herb Hudson, Director	Mike Deoudes, Director

Brooke Manor	Argyle
Crofton	Bethesda
Greencastle	Kenwood
Hobbits Glen	Lakewood
Indian Spring	Manor
Leisure World	Montgomery
Prince Georges	Montgomery Village
Tantallon	Potomac Valley
University of Maryland	Washingtonian

Under the leadership of President Bill Woolston, (Hunt Valley Country Club) and the Board, the trial organization of four Divisions worked well.

However, the concept of having an Executive Director did not turn out successfully. MISGA simply was not large enough. Either the President or the Executive was not needed-there weren't enough jobs for each. Additionally, the decentralization of management achieved by the Division concept reduced the need for a large central organization.

The matter was referred to the Plans and Policy Committee, chaired by Gil Williams. The Committee found that there was considerable dissatisfaction with the seeming overlap in functions of the President and the Executive Director as well as a feeling expressed by many Associates that they wanted elected rather than appointed officials running MISGA. In a meeting at Hobbits Glen on March 17, 1982 the Board concurred with the Committee's recommendation and eliminated the position of Executive Director.

Al Hagen, the Executive Director, was named President Emeritus of MISGA in recognition of his essential role in its founding and his many contributions.

The Plans and Policy Committee was asked to write a new Constitution and By-Laws to reflect the organizational changes effected in the previous years. This was done by mid-summer. The new Constitution and By-Laws were adopted at a meeting at Hunt Valley CC on July 27, 1982.

MISGA's Latter years

The Computer Age

In 1983 when he was elected President, Herb Hudson made it his priority. To establish a modern information and communications system. The data on all associates was entered in a computer file and sorting programs were developed. It was now possible to sort and print, by club, each associates name, address telephone number and handicap. The computer was programmed to print address labels thus making direct mailing to each Associate practicable.

Next, a formal designation of MISGA as a non-profit organization was obtained followed by obtaining a bulk mail permit from the Post Office. MISGAgrams, notices of tournaments and special events and other materials could be sent individually to each Associate. Achieving all of this took two years. Herb also served as President in 1984 to provide the continuity to accomplish this. He was greatly assisted by the Board and in particular by Sam Hastings, Vice President and by Harry Bryan, Chairman of the Associates Committee.

The Eastern Shore

Although mention has been made in the preceding paragraphs and in the appendices where appropriate, of the Eastern Shore and the MISGA Member Clubs located there, many factors unite to establish Division I as a somewhat unique entity in the history of MISGA. Hopefully, the following paragraphs will expand upon the history of Division I and its contributions to MISGA.

The leaders of MISGA were aware of the fine golf courses and golfers on the Delmarva Peninsula. Equal recruiting effort was spent there as in the Washington-Baltimore areas. Meetings were arranged at Green Hill CC on November 17, 1976 and at Talbot CC on November 30, 1976.

President Al Hagen and other MISGA officials met with representatives of Cambridge, Caroline, Elks, Green Hill, Nassawango, Ocean City, Ocean Pines and Talbot Country Clubs. The representatives of Ocean City and Ocean Pines felt that their seniors programs at that time did not match with the MISGA program. The other six clubs joined MISGA.

The Club Representatives formed an Eastern Shore organization with Reed Kurtz, Green Hill CC, as president and Ames Schuck, Caroline CC, as Vice-President. Other Club Reps in 1977 were Allen Eckel of Cambridge CC, Bill Grant of Nassawango CC, Bill Long of Elks and Ed Schmidt of Talbot CC.

The Eastern Shore began Mixer operations in 1977 and began expanding their organization in 1978 with the addition of Seaford CC in Delaware. This was the source of one of several misunderstand-

ings with the Eastern Shore activities. When the Seaford CC application reached the MISGA Secretary, he returned it as unacceptable because Seaford was in Delaware. The By-Laws at that time specified only Maryland clubs. In so doing, the Secretary was unaware of, or chose to ignore, the fact that the matter had been thoroughly discussed by the Board. Specific authorization had been given to President Hagen to invite Seaford to membership.

Reed Kurtz, as President of the Eastern Shore MISGA, quickly advised Al Hagen and the By-Laws were changed at the next Board meeting, using wording proposed by Allen Eckel, to allow membership by clubs in “contiguous areas”. Seaford joined MISGA in 1978. Shawnee CC became a member in 1979, as did Ocean City, followed by Ocean Pines in 1980, Chester River CC in 1981 and Prospect Bay and Sussex Pines in 1983.

The Eastern Shore activities ranged from Mixers through the full spectrum of MISGA events. With regard to Mixers, it was early decided that distances were too great to insist on routine Mixers between the Eastern Shore and other member clubs, however the Eastern Shore clubs have always been active in special events and invitational outings. One such, in 1979, had Eastern Shore seniors playing at Kenwood G&CC and Bethesda CC in August, then in September Caroline CC and Talbot CC were hosts to the Washington group.

Appendices B, C, D, E and F reflect the full participation over the years by Eastern Shore clubs in MISGA leadership positions and as tournament and special events hosts. It is impossible to list all who have contributed, but special mention should be made of some. Reed Kurtz, first President of the newly formed Eastern Shore District was a strong leader through the sometimes-troublesome early years. Allen Eckel of Cambridge CC, while a member of the Board, proved to be a steady influence adept at representing Eastern Shore matters. Ed Schmidt of Talbot CC was one of the founders of MISGA on the Eastern Shore.

In many ways it was fortunate that the Eastern Shore clubs were attracted to MISGA. They became a steady stimulus for improvement. For example, in 1977-78 the Eastern Shore clubs protested

the ten percent levy on Mixer prize money, terming it unnecessary and inequitable (shades of the Stamp Act). In 1979, Joe Gambatese of Kenwood G&CC and John McManus of Bethesda CC devised the MISGA Associates program leading to the rescission of the levy on prize moneys in 1980. In 1978, the admission of the Seaford CC promoted by the Eastern Shore clubs led to the revision of the By-Laws to permit inclusion of clubs in areas contiguous to Maryland.

From its inception, the Eastern Shore insisted on a degree of autonomy not realized by other MISGA areas until the reorganization of 1981-82 established the Division Management system. Each Division of MISGA attained a significant degree of autonomy.

Finally, the Eastern Shore lent its voice to the growing feeling that the President of the organization should be an elected official with a limited term of office. This, too, was achieved in 1982.

Perspective

MISGA was founded in a time of political misfortune, recession and international confrontation. Today, after 20 years, we see around us a less troubled and divisive world and a more favorable economy. However, we would be remiss if we did not use MISGA's history to assess the strengths and potential weaknesses of its operations and to point out any areas of difficulty or opportunity.

It is gratifying to note that the major precepts of MISGA have very well withstood the test of time. The concept of two clubs meeting at the host club for a friendly round of golf on a "host and guest" basis without Interclub rivalry has certainly proved a success. The companion idea that no green fees should be levied on the visiting club members has also proved its worth, although there have been, and probably will be, temptation to relax this rule under the plea of "special circumstances". So far no circumstance has been found sufficiently "special" to justify abandonment of this basic tenet.

The MISGA Constitution and By-Laws, as amended, seem fully adequate for the future. The current organization and managerial structure also seem conceptually sound and working well.

This is not to say that MISGA has been error-free and without problems, but solutions for these have been devised. For many of them we have enough experience to be sure that they are sound. More recent ones will have to be judged by future historians.

An office of General Counsel has been added to the organization. This move became apparent with the burgeoning size of the organization, and with that, the increased number of occasions when legal review was indicated. Joe Malinowski, an attorney from Montgomery Village CC has volunteered his services.

A written code of conduct has been added to MISGA's official guidance. This is a recognition of the fact that each individual is responsible for his actions. Membership in MISGA, or participation in a MISGA event, does not abrogate this personal responsibility.

Recently it was found that MISGA was not being well served by its insurance program. Expert advice was obtained; a new policy was written; and a new broker was selected to administer the program.

Through the efforts of Bill Hulihan of Montgomery Village Country Club, a Club Reps Handbook was developed. It contains guidelines for implementing the MISGA program; instructions on roster maintenance; a copy of the Constitution and By-Laws; fiscal conduct of tournaments and special events; and the interdivision schedule.

Disparity in club size creates problems in home-and-away Mixers. A large host club might have 60 or more players for a Mixer while the guest club could muster only 15-20 players. A solution that is being tested is to have two or more small clubs join to provide a larger contingent.

A recurrent problem for MISGA has been to develop and adopt a satisfactory organizational and managerial scheme for out-of-state

golf excursions. It is necessary to institute a structure that will provide a clear-cut line of responsibility and accountability from the Board of Directors to the Tournament Director and his Tournament Committee. Solution of this problem will greatly help the Board assure that MISGA ventures of this kind are conducted in conformance with the Constitution and By-Laws and the precepts upon which MISGA is based.

It is noteworthy that many MISGA clubs are increasingly being involved in sponsorship of Junior Golf, as well as increasing their participation in many charitable ventures associated in one way or another with the game of golf.

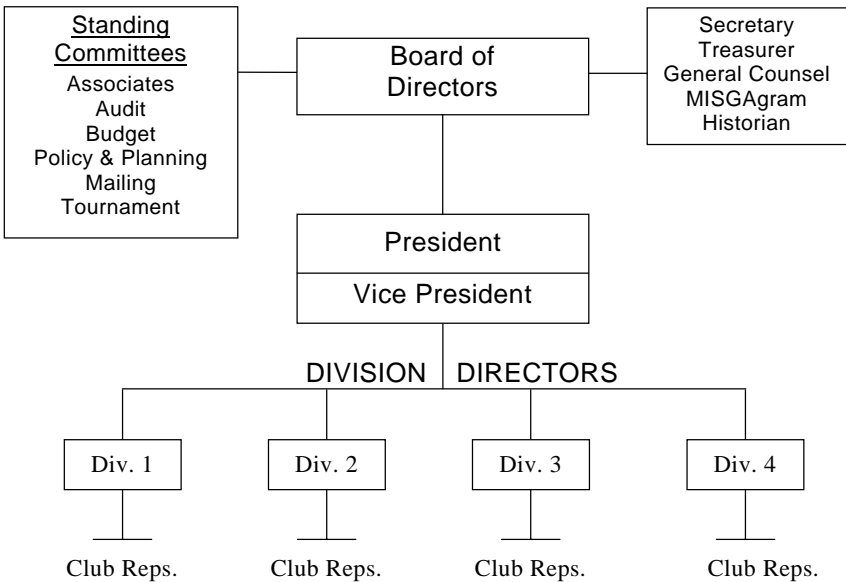
Finally, we would like to acknowledge a group who are often taken for granted, but without whom the whole thing would fall apart. These are the Club Reps, the men who do the daily “pick-and-shovel” work that simply has to be done. To them we say a sincere “Thank you and Well done”.

SECTION II

Organization and Operations of MISGA

The organization of MISGA, as of 1995, is shown below.

ORGANIZATION OF MISGA 1995



Standing Committees and appointive officials are shown reporting to the Board. However much of the day-to-day coordination and work is done with the President and Vice-President. Further, the By-Laws require that the Vice-President coordinate the activities of the Associates, Inter-club and Tournament Committees.

The following Tables lists the five Divisions* with their member clubs.

Division I - Eastern Shore		Division III - Washington East
Cambridge	Nassawango	Bowie
Caroline	Nutters Crossing	Chartwell
Chester River	Ocean City	Crofton
Cripple Creek	Ocean Pines	Hobbits Glen
Eagle Creek	Prospect Bay	Marlborough
Eastern Shore	Seaford	Patuxent Greens
Elks	Shawnee	Potomac
Green Hill	Sussex Pines	U. S. Naval Academy
Harbourtowne	Talbot	Univ. of Maryland
Maple Dale		Walden
		Woodmore

Division II - Western Md. and Baltimore	Division IV Washington West
Beaver Creek	Argyle
Glade Valley	Bethesda
Holly Hills	Kenwood
Hunt Valley	Lakewood
Piney Branch	Leisure World
Quail Valley	Manor
Rolling Road	Montgomery
Sparrows Point	Montgomery Village
V.F.W. (Frederick)	Norbeck
Wakefield Valley	
Westwinds	

* At the September 14, 1995, meeting of the Board of Directors at Crofton Country Club, a motion was made to realign Division I into separate divisions (namely Division I and Division V). Since membership in Division I has grown to nineteen clubs, it was decided that to operate as one division was no longer practical or desirable. However, ratification and approval of this motion must be conducted at the Annual Club Representatives meeting in April, 1996, for this change to become official. It will also require that necessary changes be made to the organization's Constitution and By-Laws.

The following paragraphs will describe the duties and responsibilities of each organizational segment and the manner in which incumbent(s) are selected. Because it makes it easier for understanding and because the Club Representatives are the truly indispensable members of the MISGA organization, they will be described first.

Club Representatives. The Club Representatives are MISGA Associates, one from each Member Club, who are elected annually by the Seniors organization of their respective clubs, to represent the club in MISGA activities. The Club Representatives perform the following functions:

- Arrange mixer schedules with the Club Representatives from other clubs.
- Manage each Mixer that the club has scheduled when his is the home club and provide a roster with indices to the host Club Representative for Mixers away.
- Meet with other Club Representatives in the Division to elect Directors and Members of the Board when vacancies occur.
- Meet with the Division Director to carry out business and activities of the Division and advise their Directors on matters to come before the Board.
- Set up methods to select teams to qualify for Tournaments.
- Ratify all changes to the Constitution and By-Laws.
- Represent his club at the MISGA Annual Meeting.
- Maintain communication between MISGA and the Management of his club.

Most of the Club Representatives time on MISGA affairs is spent on Mixers. The By-Laws specify that each member club has at least three Mixers annually with clubs within its Division and a minimum of one Mixer in each of the other Divisions. The re-

quirement for Mixers with clubs from other Divisions does not apply to clubs in Division I and Division V because of the distances involved in traveling to and from the Eastern Shore. The Club Representative arranges a schedule with other Club Representatives, usually with more Mixers than the minimum stated above, reports the schedule to his Division Director and then coordinates each Mixer with his counterpart. Mixer guidelines have been developed which outline the duties of the home and away Club Representative. These guidelines appear in Appendix G. The other Club Representative duties stated above are self-explanatory.

Division Directors. The Division Directors have two different jobs, one as a member of the Board of Directors, the other as the Director of the MISGA Division. In the latter role, the Director coordinates Mixer schedules among his clubs to ensure that each club plays each other club with reasonable frequency, helps to arrange for host clubs for Board meetings or other MISGA events, and serves as a conduit of information between the Board and his member clubs. In addition, the Director and his Division has considerable autonomy to carry out such activities they feel will further the purposes of MISGA and provide greater enjoyment of golfing among the Associates.

As a member of the Board of Directors, the Division Director casts a vote for the officers of MISGA annually and votes on such matters of business as may come before the Board and he may initiate motions to bring matters for consideration by the Board.

It should be noted that each Division also elects an individual to be a Member of the Board of Directors, thus bringing the number of elected Members on the Board to the minimum of eight required by the Constitution. The Member has the same duties and privileges as the Division Director insofar as Board activities are concerned. He has no responsibilities for Divisional affairs. Both Division Directors and Division Board Members are elected by vote of the Club Representatives in their Division. Directors and Members hold office for four years and may not succeed themselves. They may be re-elected to the Board after an absence of one or

more years. Their terms are staggered to maintain Divisional continuity on the Board.

Officers. The President is elected each year by the elected Directors and Members from among themselves; that is, the President must first have been elected by the Club Representatives in his Division as either a Director or Member and is then selected by his fellow elected officials on the Board to be President. The same is true for the Vice-President. The election takes place between November 15 and December 15 for the term beginning January 1. It has been customary for the outgoing and incoming Boards to meet together. The outgoing Board finishes any old business and then the incoming Board holds its election of Officers for the ensuing year. The By-Laws require that the Board of Directors meet at least three times in each calendar year. The duties of the President as specified in the By-Laws are as follows:

- To preside at all meetings of the Board and at meetings of MISGA such as the Annual Meeting of the Club Representatives.
- To appoint Committee Chairmen, ad hoc Committees and Consultants subject to the approval of the Board.

In addition to these duties prescribed in the By-Laws, traditionally the President has acted as the Chief Executive Officer coordinating the various Committee activities, assuring that the arrangements for Tournaments and Special Events are made in a timely fashion, calling meetings and developing agenda for them and leading in the response to any problems that arise.

In these duties, the President is assisted by the Vice-President who has the following duties specified in the By-Laws:

- Act for the President in the event of his absence for any reason.
- Coordinate the activities of the Associates Committee and the Tournament Committee.

In practice, the Vice-President works closely with the President and is accountable to him. The President is ex-officio member of

all Committees. He and the Vice-President are required by the By-Laws to be members of the Budget Committee.

The Secretary is appointed annually by the Board. He must be an Associate of MISGA and, being appointive, he has no vote in Board actions. His duties are to keep an accurate record of the proceedings of the Board and to distribute copies of such minutes to Board Directors and Members within fifteen (15) days of such meetings. In addition, he maintains the official records, correspondence and papers of the Association except those pertaining to financial matters that are kept by the Treasurer.

The Treasurer is appointed in the same manner as the Secretary and has no vote on the Board. The Treasurer collects and deposits all funds accruing to the Association and makes such disbursements of them that are authorized by the Board or the President. He furnishes an accounting at each meeting of the Board and provides an annual report to the Audit Committee within 30 days of the end of the calendar year, maintaining current records and accounts in accordance with sound accounting practices.

Other appointive offices in MISGA are the General Counsel, Editor of the MISGAgram and Historian. All are ex-officio members of the Board, without vote, as are all Committee Chairmen.

Committees. Standing Committees named in the By-Laws will be given in alphabetical order with a brief description of their responsibilities.

The **Associates Committee** receives the annual dues for each Associate along with a roster of names, addresses, telephone numbers, club affiliation and handicaps. The money for dues is sent to the Treasurer. The total dues he receives divided by the amount of the individual dues (currently \$4.00) must tally with the number of Associates reported by the Chairman of the Associates Committee. The rosters are forwarded to the Chief of Computer Operations for entry of all changes necessary. The Chairman coordinates activities of this Committee with the Vice-President.

The **Audit Committee** is composed of at least three individuals qualified by training and background for this work. The Audit

Committee performs a complete audit of the accounts of the Association and reports the results of the audit and any recommendations they wish to make to the Board within 60 days of the close of the calendar year.

A **Budget Committee** composed of the President, Vice-President and Treasurer, prepares a proposed budget for the next year just prior to the end of their year in office. This budget is accepted provisionally by the new Officers and Board subject to such changes, as events of the year require. The budget is thus prepared by those who have the benefit of a year in office and direct experience in the costs of operating MISGA.

The **Mailing Committee** is responsible for the processing of all mailings for the Association. This includes requesting mailing labels from the Associates Chairman, counting the labels to determine the number of copies to order from the printer, notifying the printer and the mailing firm in advance when to expect delivery of material to be printed and mailed, obtaining a check from the Treasurer for the postage needed, delivering the labels and check to the mailing firm along with the printed material to be mailed and sending the invoices for the printing and mailing expenses to the Treasurer. The Board of Directors determines whether to use first class mail rates or bulk mail rates.

The **Policy and Planning Committee** is responsible for periodic appraisal of the organization and operation of MISGA. It is the group to which the President and/or the Board refer problems for analysis and recommendation. In the event that changes in the Constitution or By-Laws are required, it is the job of this Committee to draft changes for Board review.

Finally, the **Tournament Committee**: is responsible for scheduling and managing tournaments staged by MISGA and which are open to all Associates. Generally the Divisions run their own qualifying tournaments, for example, and the Tournament Committee is involved only to ensure that these events will be completed in ample time for the Annual Tournament. The primary concerns of the Tournament Committee are the Annual Tournaments, the Spring Fling and the Fall Frolics, which will be de-

scribed later. The Committee promulgates rules for all Tournaments and suggests different formats to achieve greater enjoyment of golf in MISGA. The Committee consists of a Chairman and four members, one from each Division. The Chairman of the Committee coordinates its activities with the Vice-President.

The Board of Directors. The Board is truly the governing body of MISGA. All officers and Committees derive their authority from the Board and are responsible to it. All expenditures of funds must be authorized by the Board except that some recurring expenses may be authorized subject to review by the Treasurer or President. An example of this might be the expenses incurred by the Secretary in reproducing and mailing the minutes of Board meetings. The location and format of all Tournaments held on a MISGA-wide basis are approved by the Board on recommendation of the Tournament Committee, and all special events require Board approval. Changes in the Constitution and By-Laws are approved by the Board subject to ratification by vote of the Club Representatives.

The Activities of MISGA

The paragraphs above describe the functions of the various organizational elements of MISGA, but only passing mention has been made as to why they exist. What does MISGA do? What is it that attracts over 4,400 members?

Mixers

The most important thing that MISGA does, and what sets it apart from the usual golf association, is to schedule and hold hundreds of mixers each year. A mixer, simply, is a meeting of senior golfers from two member clubs, one of which is the “home”, or host club, and the other is the “away”, or visiting club. The date for this event is scheduled well in advance by the two Club Representatives and further coordinated a few days beforehand by the visiting Club Representative providing the host club with a roster of players with each player’s index. The host Club Representative then makes up twosomes, one member from each club, and combines

them into foursomes attempting to keep the combined handicaps equal between foursomes. The format of play is determined by the host club. After the round of golf, it is customary for the players to lunch together on a “Dutch Treat” basis. To facilitate this, a shotgun start is generally used. Each player contributes a small sum of money for prizes, which are gift certificates for merchandise in the host club’s golf shop. Green fees are not charged the visitors; each participant pays his share of golf cart rental. It is important to note that this not a competition between the two clubs (a match). It is an opportunity for the visiting club players to play a different course, to meet and form friendships with other senior golfers and an opportunity for the enjoyment of golf and fellowship at its best. At some other date that year, the roles will be reversed. The visiting club members will be the hosts to those who previously had been their hosts.

Tournaments

The current Two-Man Team Tournament, a better-ball event, had its origin in the MISGA Annual Tournament and Banquet first held in 1976. That first tournament was able to accommodate, at one member club, all who wished to participate. The tournament grew as MISGA grew, and it became necessary to have golf at two member clubs and the banquet at one of them. Later, Divisional qualifying tournaments were required with the winners of these advancing to the MISGA-wide tournament. Because of its popularity and because of the growth in MISGA, a quota system was established. The number of teams in each division that can advance to the final tournament is based on its total number of Associates. In turn, the number of teams a club may send to the division tournament is based on its total number of Associates.

In March of 1990, a proposal was presented at a Board of Directors meeting to establish a MISGA-wide A B C D Tournament whose prize money would come from the investment of a donation of \$5,000 from an anonymous Associate. There were two stipulations:

10. The tournament format must be individual flights with at least 40% of the prizes going to low gross winners.

11. Each prize would be named for a Past President.

Divisions II, III and IV had been holding an A B C D flight tournament for some years. It would be incumbent on Division I to establish such a tournament. The winners from each Division, would advance to the Presidents Tournament (now known as the Past Presidents Tournament).

Out-of-State Events

In the early days of MISGA, the scheduling of out-of-state events was not formalized. Most of the early out-of-state events were conceived by individual members and were offered to the membership on a first come first served basis.

MISGA out-of-state events have become very popular and they are now an integral part of the MISGA Program. Figure 1 is a chart of the events held each year.

Myrtle Beach 1977-1981

Al Hagen, founder and first president of MISGA, initiated the first out-of-state event at Myrtle Beach, SC.

This event was held in the Spring of 1977. It was so successful that MISGA returned in March 1978 with 98 participants. There were 80 golfers, 54 men and 26 women. There were five days of golf at five different courses.

MISGA returned to Myrtle Beach in April 1979. After an outing at Callaway Gardens in the Spring of 1980, they returned to Myrtle Beach for the last time in 1981.

Foxfire 1981-1988 & 1994

The first Fall event was held at the Foxfire Resort, Pinehurst, NC, in November 1981 under the direction of Al Hagen. There were 60 attendees who enjoyed four days of golf.

The success of this event led to continuing to schedule a Fall Frolic at Foxfire through 1988. Shortly thereafter Foxfire went into bankruptcy and we did not return again until 1994. At the height of its popularity, there were four consecutive weeks scheduled. When Al Hagen became President Emeritus in 1982 and started spending much of his time in Florida, Herb Hudson took over the Fall Frolic. Soon thereafter, the MISGA Board of Directors assigned the running of out-of-state events to the four Division Directors as follows:

Division I	Eastern Shore Spring Fling and the Florida Fling
Division II	The Club Representatives Fall Bash
Division III	Jekyll Island
Division IV	Fall Frolics

MISGA returned to Foxfire (with new owners) in October 1994 for one week. Two days were lost to rain and there were some housing difficulties. The courses were fine and service was excellent.

Bahamas 1982

This was the first MISGA event held outside the United States. The organizers were Ed Maguire and Sam Bebee. One hundred and five associates and wives spent a week at the South Ocean Beach Hotel and Golf Resort. For some reason, the most memorable part of the event was the rum fruit punch served on the lovely beach.

Guadalajara, Mexico, 1984-1985

This event was initiated by Duane Swindle, who with his wife, Ethel, owned a winter home in the area. Twenty-eight persons had nine days of near perfect 80-degree weather with play on three different courses with excellent caddies. With their own bus and driver, they were able to get in some sightseeing and shopping. The highlight of the event was a cocktail party hosted by the Swin-

dles at their home in Chapala. The group had rooms at the El Tapitio Hotel in Guadalajara.

The success of this event led to the scheduling of two weeks in February 1985. Duane Swindle arranged the scheduling in Mexico. Sam Hastings hosted the first group of 36; Warren Dean hosted the second group of 40. Besides golf, the group enjoyed many social events plus sightseeing and shopping.

Pinehurst 1987

In November 1987, MISGA traveled to one of the great and most famous sites of American golf, Pinehurst, NC. This event was organized and conducted under the leadership of Ray Keany and his committee of Dick Redinger, Sam Hastings and Doug Moats. Accommodations were in the historic hotel and some of the nearby villas. Golf was played on three different courses. Unfortunately, the most memorable item during the event was the snowstorm that delayed play one day.

Fort Myers, Florida 1985-1987 & 89

The first winter or Florida Fling was arranged by Al Hagen and coordinated by Herb Hudson in Maryland in February 1985. Three courses were played; the “Long Mean” and the “Wee Friendly” at Fiddlesticks Country Club and “Turtle Back” at Burnt Shores Marina. There were 72 participants the first year. The La Quinta Hotel was the headquarters each year for this event, but the courses played each year varied. Group size varied from roughly 50 to 60 people. After the first year, Division I was responsible for running this event aided by Al Hagen in Florida.

Grenelefe, Florida 1988

In March 1988, a number of MISGAites made what turned out to be a one-time visit to Grenelefe Resort in Florida. For a number of reasons, including costs, the group decided not to return.

Scotland 1986

In May of 1986, a small group of MISGA associates traveled to Scotland on a trip arranged by Sam Hastings. They played the

Kings course at Gleneagles; Carnoustie and the Old Course at St. Andrews; Muirfield and Dalmahoy near Edinburgh; Royal Troon at Turnberry; and Ailsa. The accommodations were first class. Needless to say, time was found to do some pub hopping and single malt sampling.

Current Out-of-State Events

Cape Coral Golf and Tennis Resort 1990-Present

Cape Coral Golf and Tennis Resort, Cape Coral, Florida was discovered by Bill Hulihan and recommended to MISGA. Division I formed a committee under Francis McKee to run the first event in February 1990. It was so successful that it was increased to two weeks in 1991. It has continued so. At times the group numbered almost 100 people, but in later years it has averaged closer to 50 persons per week. Although the cost is higher than other MISGA outings, it is still a bargain for golf and accommodations in Florida at the height of the Winter season.

Sea Trail Plantation 1989-Present

Sea Trail Plantation, Sunset Beach, NC, became the successor site to Foxfire in the Fall of 1989 and continues to be one of the Fall Frolic sites. Sea Trail gets its name from the “sea trail” which in colonial times ran from Georgia north through the colonies to the seat of government. The cart path on the 10th hole of the Maples course follows the old sea trail. After a shaky start in 1989 due to an early Fall hurricane delaying some construction on the site, the resort has continued to improve. It provides golf on three courses—Maples, Jones and Byrd; first class accommodations in one to four bedroom condos; excellent food and friendly services. Non-golfing ladies have found many interesting and historic sites to visit while the husbands played golf. There is also a wonderful beach just across the Intracoastal Waterway that is great for walking, shelling, bike riding, bathing and fishing.

The largest annual attendance approached 500. The newness of Sea Trail continues to appeal. All of the facilities are new and modern, particularly the housing. The hosts at Sea Trail have in-

cluded Doug Moats, Dick Redinger, Claude Widerman, Andy Anderson, Bud Marshall and Sam Hastings.

Jekyll Island Resort 1986-Present

The first outing at Jekyll Island, Georgia was held from November 9 to November 13, 1986. There were 120 attendees. The event was oversubscribed by 50%. George Kohut from Montgomery Village was familiar with the golf scene there and was instrumental in getting MISGA interested in the area. Lee McCarriar, a winter resident there, organized the first event. He was ably assisted by Jim Bell and Marks Jaillite. Marks had been wintering there for some ten years and was quite knowledgeable about the area. Accommodations were at the Comfort Inn (known as the Wanderer), which is located right on the beach. Golf is played on two now three excellent courses where the staff has been very cooperative. This has been one of the most popular Fall events. For the early years, even with two weeks, it was sold out. There are some associates who, with their wives, have attended this outing every year. It is now a one-week event and still one of MISGA's best bargains.

After McCarriar's death, Jim Bell took over the leadership role in 1987. He turned the reins over to George Lipscomb, Brad Frapart and Merle Shumaker in 1990. They continue to run it.

Seabrook Island 1993-Present

Seabrook Island, SC, was brought to MISGA's attention by Jim Bell. The island is adjacent to Kiawah Island (of Ryder Cup fame) and is thirty miles south of Charleston, SC. The resort is member-owned and is well established with both permanent and vacation residences. It has two golf courses—Crooked Oaks by R. T. Jones and Ocean Winds by Dan Maples. They both are challenging, picturesque and well conditioned. The privately owned accommodations are well furnished and tastefully decorated. Breakfast is served in the Clubhouse; the cocktail hour and evening meal are in the Convention Center overlooking the Atlantic Ocean and the Edisto River. The verandah offers a view of beautiful sunsets.

In 1993, there was one outing that was oversubscribed. In 1994, there were two weeks fully subscribed. In fact, MISGA was so encouraged that a Spring outing in March 1995 was organized and successfully conducted. The organizer and host of these events is Jim Bell.

Santee 1995-Present

Santee, SC, was brought to MISGA's attention by Otis Jefferson. It is located on Interstate 95, just south of Lake Marion. There are numerous golf courses in the Santee resort area. The two courses used in 1995 were the Lake Marion Golf Course and the Santee-Cooper County Club. Both had Bermuda grass greens and fairways. Accommodations were in the Howard Johnson Hotel. A private dining room was used for breakfast, cocktail hour and evening meals. For the non-golfing wives, there were outlet malls and antique stores, boat tours on Lake Marion and historical Charleston only 65 miles away.

For years, many of our older members and their golfing wives have suggested that we schedule a rest day, rather than playing golf for four straight days. Our host, Otis Jefferson, arranged to play golf on Monday and Tuesday, then take Wednesday off for a rest and sightseeing day and conclude the golf on Thursday and Friday. Everyone seemed to enjoy the break day.

Others

An important meeting is the Annual Meeting of the Club Representatives in early spring each year. Club Representatives are encouraged to attend. It provides an excellent communication vehicle between the Club Representatives and the members of the Board. In addition, it is an opportunity for the Club Representatives to get to know each other. The meeting is chaired by the President. The meeting is followed by a round of golf at the host club. A list of dates and host clubs is given in Appendix F.

For several years, it had been the custom for the Board Members to get together for one or two days in the Fall after the election of new Board Members and Officers. In 1984, the Club Representa-

tives were invited as well, the host clubs being Kenwood G&CC and Bethesda CC. It has proven to be a popular and enjoyable event. The Board Bash has become another MISGA tradition. Division II is the host.

Board meetings are usually held at a member club. An attempt is made to spread them around so that each Division has its fair share of responsibility to host the meetings. Board meetings are generally followed by a round of golf at the host club course.

SECTION III

History of Individual Member Clubs

ANDREWS AIR FORCE BASE

In 1985, Col. (Ret.) Dick Barrett organized a Seniors' group and applied for membership in MISGA. They were accepted in the Summer of 1985 and remained a member until 1988. Their membership was revoked because their new Base Commander would not let visiting Seniors play without paying green fees.

ARGYLE COUNTRY CLUB

Argyle is located off the west side of Layhill Road at 14600 Argyle Club Road, Silver Spring, Maryland. Senior's tees course rating is 69.8, with a slope of 125. Total yardage is 6,118.

MISGA at Argyle was started in 1976. During this period, F.W. (Bill) Burnett was the focal point. It is believed that four mixers were played at home and away.

Bill Burnett was President of Argyle Seniors Association in 1977, when Argyle received their MISGA plaque at the Annual Fall Tournament at Lakewood. He remained, as MISGA Representative in 1978 and at the Annual Fall Tournament at Montgomery Village, in September, he and Val Williams were the gross winners, shooting 68 -- a record! Mixers were played with Eaglehead, Potomac Valley, Lakewood, Talbot/Cambridge and Brooke Manor. Bill continued as MISGA Representative in 1979. Eight mixers were played at home in 1979, increasing to 10 in 1980.

Dave Watson was selected MISGA Representative in 1980 and established the first MISGA logo. He was voted to membership on the MISGA Board of Directors and Sam Hastings became head of the Associates Program in 1980. The Annual Team Championship was played at Argyle on September 26, which included 144 par-

ticipants in the Championship match, 936 associates participated in the mixers with a total revenue of \$11,665.

Sam Hastings was selected as the MISGA Representative in 1981 and immediately made a serious endeavor to give MISGA greater publicity at Argyle. In 1982, Sam was elected vice-president of MISGA as well as Director of Division IV. Dave Watson was re-appointed to the MISGA Board of Directors. Again, ten mixers were played.

In 1983, Art Browne was selected as MISGA Representative. Argyle played nine mixers at home, plus a mixed mixer with Lakewood. Argyle enrolled 114 MISGA Associates in 1983.

In 1984 Art Browne continued as Representative and Sam as Division Director. Sam was elected President of MISGA in October serving in 1985. In 1984, Argyle had a total of 128 Associate Members.

Art Brown Continued as Representative throughout 1986, when he retired and moved to Florida. He was replaced by Ed Purcell in 1987, followed by Mike Berry in 1988. In 1989, Les Thomas, then President of Argyle Seniors, was also selected MISGA Representative, but he unfortunately passed away at the start of his term. He was replaced by Elzie Bullington, who served as both Argyle Senior President and MISGA Representative throughout 1992. During his tenure, the Argyle MISGA members grew to 140+. In 1993-94, Ken Gutschick was elected to the dual role as Argyle Senior President and MISGA Representative, with Tom McNamara serving as Assistant Representative. In 1994, Argyle Country Club, under the leadership of Dave Watson, then President of Argyle, rebuilt and expanded its clubhouse at a cost of over \$2 million. Lunches at home matches were appropriately served in tents. In 1995 Ken Gutschick and Tom McNamara changed roles, with Tom becoming head of the Seniors and the MISGA group. Once again ten MISGA home and away matches were scheduled in 1995, including seven in Division IV, the balance at Piney Branch, Patuxent Greens and Woodmore. In 1995, Argyle hosted the Division IV qualifying Past Presidents Tournament. Approximately 140 Argyle seniors were members of MISGA in 1995.

Argyle is proud to be a member of MISGA and will work hard to see the continuation of this respected and fine senior's golfing organization.

Ken Gutschick

BEAVER CREEK COUNTRY CLUB

Beaver Creek is located off route 66, South of Interstate 70, at exit 35 near Hagerstown. Senior's tees course rating is 70.2, with a slope of 112. Total yardage is 6,688.

In 1977, Beaver Creek Country Club joined MISGA with Bill Frank as Club Representative. In 1979, George Fisher became the Club Representative And continued in that capacity until 1982, when Don Dysert took over. In 1984, Harry Sayers took over as the Club Representative And served for ten years. Harry Patton is the current Club Representative.

In 1977, Beaver Creek began with 25 members and increased its membership to 73 in 1985. Our membership has steadily increased and is currently 95 members. We play 11 home Mixers and 11 away Mixers and 2 yearly tournaments with full cooperation of the Pro and Club Management.

One of Beaver Creek's associates, the late George Fisher, was elected to the MISGA Board of Directors and was serving as Vice President of MISGA at the time of his death in 1982.

Harry Patton

BETHESDA COUNTRY CLUB

Bethesda is located at 7601 Bradley Boulevard, Bethesda, Maryland. Senior's tees course rating is 69.0, with a slope of 118. Total yardage is 6,056.

The idea for the formation of a senior men's golf group at Bethesda Country Club was conceived when representatives from 4 or 5 clubs met in September 1975, at Kenwood C. C. Bethesda was represented by the late John McManus.

Later in September, John McManus chaired an informal meeting to determine if any interest existed among Bethesda seniors for the type of organization set forth above. The idea was enthusiastically endorsed. As a result, John petitioned the Golf Committee through the chairman, Dr. Donald C. Brown, to grant a Seniors' Day each week, when seniors could have guest fees waived for a maximum of three guests.

The Board of Directors of Bethesda Country Club, at their regular meeting on January 21, 1976, unanimously approved a request that one day per month be recognized as Retired Seniors' Day.

In eight years, the Association has grown by 218%, from 44 in 1976 to 140 in 1984. Participation in home events has increased from 30 to 40 per event in early days to upwards of 90 currently, and was limited to 40 players each from Bethesda and visiting MISGA Clubs.

From 1976 to 1979, the seniors operated without benefit of a formal organization. But in 1979, Sam Gibb and Bill Hartman introduced a set of by-laws which were accepted by the membership and which established an organization elected by the members.

The restriction of one Friday per month has limited senior activities at Bethesda. The seven days per year the seniors are allowed were generally filled with 4 visiting MISGA Clubs and 3 Member-Guests during 1976-80. Activities increased under the able leadership of Dick Redinger in 1982-83 to a yearly total of 19 events—still only 7 or 8 at home and the remainder as guests of other MISGA Clubs.

Bill Hartman

Not a whole lot has changed over the past ten years. The number of dates per month for seniors to invite other MISGA Clubs remains at one per month from April through October. One or two days are allotted for the seniors to invite another senior for a Member-Guest Tournament.

The initial by-laws are still followed without revision, thus allowing for the Senior Chairman being allowed to succeed himself only once, or a two-year term.

An overnight program, developed in the early eighties, has been extended to include an outing once each month from April through October and in some instances, twice monthly, depending on the Chairman of the “overnighters”. Sign-up sheets are posted for participants with a maximum of sixteen and in some instances, twenty. On an overnighter, foursomes are developed for play on the afternoon of the first day and the morning of the second day. Lodging is usually done in a local motel or hotel and most of the group enjoys dinner at a select restaurant. Sites are chosen on the basis of the quality of the course and at a maximum distance of 150 miles.

Our membership has fluctuated from a high of 157 members in 1987, to a low of 112 in 1994. In the Fall of 1994, the Bethesda Seniors’ treasury had a surplus of cash and the membership voted to make a charitable contribution to the Luirie Center for Infants and Children.

Dick Redinger served on the MISGA Board of Directors from 1984 to 1987. He also served as the Chairman of the MISGA “Fall Frolic” at Foxfire, Pinehurst and Sea Trail Plantation from 1986 to 1991.

Dick Redinger

BOWIE GOLF AND COUNTRY CLUB

The Club is located at 7420 Laurel/Bowie Road (State Route 197) approximately three miles north of Route 50. The Senior’s tees course rating is 67.7, with a slope of 110. Total yardage is 5838.

In the Fall of 1985, the Bowie Golf and Country Club’s request to be included as a member club in MISGA was accepted. On November 25, 1985, the Bowie Senior Golfer’s Association (BSGA) was officially formed by a dedicated group of seventeen senior golfers. Emery Adams, Leroy Leifer and Richard Parker were elected President, Vice-President and Secretary/Treasurer, respectively. Emery Adams also served as the first MISGA Representative. The Bowie PGA Professional in 1985 was Fred Ryder and he continues in that position today.

After a slow start, the Bowie MISGA/BSGA Association grew to 31 members by the end of December, 1985. Today they have 70 members on their roster, with a list of several seniors who have expressed an interest in joining. MISGA assigned Bowie to Division III and they began playing in MISGA mixers in 1986

Although no members have served on any MISGA committees thus far, several members and their wives have served on several Jekyll Island Junket Committees. On August 7, 1995, Bowie hosted the Division III 2-man team qualifier.

Robert Guenther

BROOK MANOR COUNTRY CLUB

Brook Manor C. C. Was one of the founding clubs in 1976. In 1977, the BMCC president, Gene Walsh, asked Neill Turner to organize a complete program for the BMCC Senior men. Neill was the first Club Representative, as well as, Secretary of MISGA from 1979 through 1982.

In 1980, a formal charter was developed for BMCC Seniors and approved by the Club. Frank Thornton was elected President and Tony Grande Vice-President. Brooke Manor participates in MISGA Mixers and other events, and in 1980, hosted the Fall Qualifying Tournament, and in 1983, the Flight Championship. In addition, the BMCC Seniors play three events with the BMCC Ladies Organization annually, run a Winter League that is well attended, hold a Seniors Championship each year and provide many services to help improve the BMCC course and operate special events. Starting with about 35 members, BMCC now has 140 MISGA Associates.

Tony Grande

The above is the individual club history of BMCC from MISGA's 1976-1985 History. On September 25, 1993 golf was discontinued at Brooke Manor. The owners of the land started to construct housing on the golf course.

To update BMCC's history: Marks Jaillite served three years on the Board of Directors as Director of Division III. They hosted many Division III and MISGA Special Events. George Lipscomb was appointed Chairman of the MISGA Tournament Committee in 1990 and still holds that office (he is now a member of Montgomery CC). BMCC had 154 MISGA Associates in 1993. Note: Many of BMCC members have joined Montgomery CC and Patuxent Greens GC.

Merle Shumaker

CAMBRIDGE COUNTRY CLUB

Cambridge CC is located about 4 miles west of Cambridge MD. From Route 50, go West on Route 343 to Horn Point Road and turn right to Country Club Road. Senior's tees course rating is 65.5, with a slope of 106. Total yardage is 5,589.

Cambridge Country Club was one of the original six Eastern Shore clubs to become part of MISGA, joining in 1977. Its first Club Representative was Allen Eckel.

In 1977, Cambridge started with 8 to 12 MISGA Associates. By 1985 they had 35 members. Now they average 50 Associates per year.

Allen Eckel served on the Board of Directors of MISGA from 1978 to 1982.

Bill Gore

CAROLINE COUNTRY CLUB

Caroline Country Club is located about five miles south of Denton, MD on Pealiquor Road. Senior's tees course rating is 69.7 with a slope of 113. Total yardage is 6,273.

Caroline Country Club joined MISGA in 1977, being one of the original six clubs from the Eastern Shore to do so. Ames Schuck was the first Club Representative. He, Al Eckel (from Cambridge Country Club) and Sam Bebee helped to organize the MISGA Seniors at Caroline.

In the beginning, it was hard to find 12 active associates to attend Mixers, but membership grew to 64 by 1994.

Ed Maguire served on the Board of Directors and was Director of Division I in 1982, 1983 and 1984. Sam Bebee served on the Board of Directors from 1981 to 1986.

Leslie Lutz

CHARTWELL GOLF AND COUNTRY CLUB

Chartwell is located in Severna Park, MD, between Baltimore and Annapolis, bordered on the east by Route 2. Senior's tees course rating is 70.3, with a slope of 129. Total yardage is 6,151.

Chartwell joined MISGA in 1977. At that time Chartwell was a new development of homes that attracted young married couples and very few senior citizens. It was due to a lack of senior members and limited participation at this time that made it necessary for Chartwell to drop out of MISGA in 1980. As the population of Chartwell matured and there were more people retiring, a group of men began to meet every Tuesday to play golf. The group had no rules or organizational structure, but due to the influence and leadership of Jack McCabe became known as "Jack's Pack" and became the social gathering place for senior men at the golf club. This name is still used to describe the senior men's golf activities on Tuesday. Members of this group successfully petitioned for membership in MISGA and were re-admitted into MISGA in 1985. We now maintain separate rosters for members of MISGA, who pay an annual fee, and Jack's Pack that remain open to all players.

Jack McCabe, Joe Rogers, Dawson Parlett and Hugh Gambrell (who was our first Club Representative) were instrumental in getting Chartwell to rejoin MISGA.

Approximately 30 players signed up when Chartwell rejoined in 1985. During the 2000 season, 69 associates enjoyed the MISGA organization's activities. Currently we have ten home Mixers and ten away Mixers. In addition, we have an annual Chartwell year-end tournament for our members.

Chartwell has hosted many Division events and some major MISGA events.

Tim Harris

CHESTER RIVER COUNTRY CLUB

Chester River Country Club is located 1.6 miles south of Chestertown, MD on route 189. Senior's tees course rating is 68.7, with a slope of 117. Total yardage is 6,000.

Chester River became a MISGA Member Club in 1981, following an invitation from Green Hill to attend a MISGA meeting. Ed Meyer was elected Club Representative and held that job for many years.

In 1981 there were 55 MISGA Associates. Membership grew to 67 in 1985 and currently is 81.

Alday Clements

CRIPPLE CREEK COUNTRY CLUB

Cripple Creek is located on the south side of the Indian River, about four miles inland from the Atlantic at Bethany Beach, DE. Senior's tees course rating is 69.6, with a slope of 120. Total yardage is 6,306.

Cripple Creek was admitted to MISGA membership in 1995. The course plays to a par 72. A new clubhouse was opened during the summer of 1995.

MISGA leadership has been provided by Tom Ryan as Representative and Vic Beiriger as assistant Representative. First year membership numbered 28 MISGA Associates.

Tom Ryan

CROFTON COUNTRY CLUB

Crofton is located on the east side of MD Route 3, about four miles north of the intersection of Routes 50, 301 and 3. Senior's tees course rating is 68.3, with a slope of 114. Total yardage is 6,010.

In 1980 the Crofton Country Club was an active member of the Washington Metropolitan Golf Association (WMGA). Through participation in annual Senior Team Championship Tournaments sponsored by WMGA, Crofton senior golfers met and talked to MISGA Associates. Ed Dosek, a past president of the Crofton Men's Golf Association and a member of the Board of Directors of WMGA asked Gil Williams to address a meeting of Crofton Seniors on February 11, 1981, with Club Management and Club Pro present. As a result of this meeting, the Crofton Country Club applied for membership in MISGA. The Seniors organized the Crofton Men's Seniors Golf Association electing Mike Melvin President and Harry Bryan MISGA Representative.

Crofton sort of staggered through the 1981-82 seasons with Mixers with five clubs and a gradual waning of interest by those golfers in their early and mid fifties. However, there developed a core of senior golfers who recognized the merits of MISGA and faithfully provided their attendance, advice and support. In 1983, officers were elected who were dedicated to the purposes of MISGA. They scheduled and played Mixers with nine clubs with full support of the Pro and Club Management. Crofton now schedules Mixers with 8 to 10 clubs each year. Associate membership dropped to a low of 20, but steadily grew to over 80. After two years as assistant Representative, Merle Shumaker relieved Harry Bryan as MISGA Representative in 1984 and held that job until 1995 when Web Corley took over.

In 1982, Harry Bryan was elected to a three-year term on the Board of Directors. He was Chairman of the Associates Committee from 1983 to 1985 when he took the chairmanship of the Policy and Planning Committee. In 1986, he became Editor of the MISGAGram and held the job until his death on February 15, 1989.

In 1988, Merle Shumaker was elected to the Board for a four-year term. He was elected Vice President of MISGA in 1990 and President in 1991. He served as Chairman of the Tournament Committee for the Jekyll Island Junket from 1989 through 1992. He was appointed Editor of the MISGAGram in 1993 and still holds that job.

In 1992, Harry Breitbach was elected Treasurer of MISGA and is still Treasurer.

In 1994, Dave Stevenson was appointed Chairman of the Mailing Committee, and still fills that office.

Web Corley

EAGLE CREEK GOLF COURSE

Eagle Creek is located on Dover Air Force Base, approximately 4.5 miles south of the center of Dover, DE, on Route 113. Senior's tees course rating is 67.5 (par 68), with a slope of 114. Total yardage is 5,898.

Eagle Creek was originally built as the Dover Air Force Base Golf Course with nine holes and opened for play in 1960. More land was acquired and cleared later to enable it to expand to 18 holes, which came into being during late 1971 and early 1972. Since then the layout and hole pattern underwent a few changes and the name changed to what it is now, Eagle Creek Golf Course. During October of 1994, construction began on a new watering system for all the greens, tee boxes and fairways. Additional tee boxes have been built to extend the yardage on some holes so that they can qualify as par 5's. We expect that the present construction will be completed and that the course will be in acceptable playing condition in time for us to host Seaford on May 8, 1995. Later this year cart paths will be constructed; the holes will be re-lasered, which means that the course rating, slope and yardage will change. We expect the new par for the course to be 70. The use of yellow or gold senior tees may also be introduced in the near future.

During the early Fall of 1994, Craig C. Stone, the Club professional, asked Pete Tester if he would be interested in forming and representing the Club Seniors in a group that would qualify for entry in MISGA. Subsequently, Otis P. Jefferson and Earl Rowdon came to Eagle Creek and gave the Senior membership a detailed briefing on MISGA and the requirements necessary to join it. The senior membership then elected Pete Tester as their representative and Arnold Simms as his assistant. Later Tester and Simms at-

tended a Division I meeting at the Elks in Salisbury, MD, where Eagle Creek was voted in as the 17th Club in Division I. In his March 1995 letter, Otis announced that the Board unanimously approved the admission of Eagle Creek in MISGA. At present, 56 Seniors have joined MISGA and we expect that before long the membership will exceed 60. For the 1995 season we have scheduled 28 Mixers, 14 at home and 14 away.

Arnold Simms

EASTERN SHORE YACHT AND COUNTRY CLUB

Eastern Shore is located on Route 628 in Melfa, Virginia. Senior's tees course rating is 69.5, with a slope of 116. Total yardage is 6,130.

Eastern Shore joined MISGA in 1987 with Mr. Sherwood Shreaves being the first MISGA Representative. It was through his efforts that we are now a member of MISGA. We started in 1987 with about 25 members and have grown to 62 over the past seven years.

The Eastern Shore Yacht & Country Club was founded in 1960 and is located in Melfa, Virginia on the Delmarva Peninsula. Because it is located on the Pungoteague Creek, there is a surplus amount of water and it comes into play on nine of the 18 holes.

Morgan T. Ridington

ELKS GOLF CLUB

The Elks Lodge and Golf Course is located southeast of Salisbury, MD, between Route 50 and Route 12, off Beaglin Park Drive, across from Salisbury Zoological Park. Senior's tees course rating is 69.3, with a slope of 122. Total yardage is 6,002. Elks is a par 72 nine hole course.

In 1976, there were two meetings with Al Hagen and MISGA officials. The first was held at Green Hill Yacht & Country Club on November 17th and the second was held at Talbot Country Club on November 30th. Eight clubs from the Eastern Shore were represented, but only six were accepted by MISGA. The Elks Golf Club

was one of those accepted. William “Bill” Long represented the Elks at these meetings. He also sold the concept to the Elks Golf Committee and became the first MISGA Club Representative. Bill remained Club Representative for five years, 1977-1982. In the years that followed, Bill devoted his time and effort to promoting the Elks Junior Golf.

Francis “Mac” McKee took over as the Elks MISGA Club Representative in 1982 and guided the Elks for the next 11 years, ending in 1993. In 1983, he served on the Division I Policy and Planning Committee and in 1985, was elected Director of Division I and served for three years on the MISGA Board of Directors. In 1987, Mac was elected President of MISGA for a one-year term. Division I sponsors the Florida Fling and he has been on this four-member committee since 1986. In 1988, Mac accepted the duties of Division I Associates; Bob Brittingham was elected Elks MISGA Club Representative during a MISGA membership meeting in October 1993.

In 1995, there are 70 Elks MISGA Associates and we have 36 Mixers scheduled.

Bob Brittingham

GLADE VALLEY GOLF CLUB

Glade Valley is located on Glade Road about one mile off Route 194, between the towns of Walkersville, MD and Woodsboro, MD in Frederick County. Senior’s tees course rating is 69.4, with a slope of 112. Total yardage is 6,005.

Glade Valley Golf Club, a relatively new golf club, opened in 1991. They applied for MISGA membership in 1993. Chip Murray was the Club’s first MISGA Representative.

The initial 1993 membership was 36 MISGA Associates, and has grown to its current membership of 54. During the 1994 golf season, the Club has participated in 21 interclub Mixers.

Chip Murray

GREEN HILL YACHT AND COUNTRY CLUB

Green Hill is located eight miles west of Salisbury, MD, on Route 349. Senior's tees course rating is 70.8, with a slope of 124. Total yardage is 6,521.

Green Hill joined MISGA in 1977 as a member of Division I. Reed Kurtz served as our first Club Representative and was also Director of the Eastern Shore MISGA organization.

For nine consecutive years, from 1984 through 1992, Green Hill and Nassawango hosted the MISGA Spring Fling special event. The Spring Fling was held here again, in 1995. Green Hill has always been very supportive of MISGA special events wherever they are scheduled.

Our Club currently plays 23 Mixers, home and away, per year and all are well attended.

Bill Ransdell followed Reed Kurtz and served as Club Representative from 1981 through 1985. John Turner succeeded Bill in 1986 and served as Club Representative through 1988. Hilary Taylor took over in 1989 and served through 1994. Don Day became Club Representative in 1995.

John Turner was elected to the MISGA Board of Directors for a three-year term in 1987. He was elected Vice President of MISGA in 1989 and President in 1990.

Bill Ransdell was elected to the MISGA Board of Directors in 1986 for a three-year term.

Don Day

HARBOURTOWNE GOLF CLUB

Harbourtowne is located in the community of Martingham, about two miles west of St. Michaels off Route 33 in Talbot County, MD. Senior's tees course rating is 68.3 with a slope of 118. Total yardage is 6,128.

In 1987, when we joined MISGA, the resort was known as Martingham Inn. A new owner renamed the resort Harbourtowne.

We currently have 78 MISGA Associate members.

John R. Backman

HOBBIT'S GLEN COUNTRY CLUB

Hobbit's Glen is located south of Route 108 at the intersection of Harpers Farm Road, Columbia, MD, in Howard County. Senior's tees course rating is 69.7, with a slope of 117. Total yardage is 6,177.

1976 was our first year of association with MISGA. Al Hagen, President of MISGA, gave a presentation to a small group and explained the workings of MISGA. The late Hans Marchand was Hobbit's Glen first MISGA Representative.

In 1977, we obtained permission from the Columbia Association to join MISGA. In 1981, a formal Senior Golf Association was formed with Lee McCarriar being elected as our first President and Sid Rapoport as Vice-President. The following seniors served as President (in order of their service): Ken Pierson, Harry Meacham, George Hay, Frank McGinty, Walter Wright and Joe Cappelli.

Membership of MISGA Associates has grown from a handful of golfers to our present membership of over 80. MISGA Representatives, in the order of their service are: Hans Marchand, Frank Koby, Lee McCarriar, Phil Cole, Jim Bell, George Hay, Tony Strank and Norman Arm.

Hans Marchand was the first Chairman of the Audit Committee for MISGA. Sid Rapoport was MISGA's Treasurer from 1981 to 1992. Ken Pierson was Editor of the MISGAGram from 1989 to 1992. Lee McCarriar and Jim Bell ran the MISGA Special Outing at Jekyll Island for many years. John Zitnyar, Sid Rapoport and his wife Anneliese were also on the Jekyll Junket Committee.

Norman Arm

HOLLY HILLS COUNTRY CLUB

Holly Hills is located in Ijamsville, MD (just south of Interstate Route 70). Senior's tees course rating is 68.1, with a slope of 123. Total yardage is 5,991.

Harry Decker, upon joining the Club, approached Bob Ritchie, who was founder and then owner of Holly Hills with the idea of having a MISGA group similar to the one he previously belonged to at Eaglehead (now Westwinds). Harry became the first Club Representative in 1980. He was followed by Jack Byrnes in 1981, Hal Renegar in 1982, Pete Oakes in 1983, Bob Fuchs in 1984-1986, George Meyer in 1987-1991 and John Rooney in 1992 to present date.

The MISGA Associate membership grew from 15 to 52 and is still growing. Our membership is very active and we play an average of 13 Interclub Mixers each year. Our membership has also been well represented in MISGA out-of-state Special Events. In 1993, Kemper Sports Management purchased Holly Hills and greatly improved the physical condition of the course making it one of the best in the entire state of Maryland.

Hal Renegar served on the MISGA Board of Directors from 1983 to 1985. He was relieved by Bob Fuchs in 1986, who served through 1988. In MISGA year 1988, Bob was elected President of MISGA for one year. In 1988, Ken Daly was elected Secretary of MISGA and served in that office until 1989. George Meyer was elected for a fourth term on the Board of Directors in 1993 and was elected Vice-President of MISGA for 1995.

John Rooney

HUNT VALLEY GOLF CLUB

Hunt Valley is located North of I-695 (Baltimore Beltway) and east of I-83 in north Baltimore County. It has 27 golf holes divided into three sets of nine holes: Red, White and Blue. Senior's tees course rating, slope and total yardage are: Red and White - 67.5, 111 and 5,706; White and Blue - 67.9, 117 and 5,758; Blue and Red - 67.7, 116 and 5,778.

Hunt Valley became a MISGA member in 1977. Dick Edgar, then owner and General manager of this non-member-owned private club, was instrumental in Hunt Valley joining MISGA to encourage senior memberships and senior activities. Hunt Valley was bought by the American Golf Clubs, Inc. in 1984 and continued Edgar's commitment to club seniors and the MISGA program.

The first Club Representative was Walt Sibiski for a few months. Vern Mergl then took over and organized the small group of ten or so senior MISGA associates. Vern served until 1982, increasing membership to about 20. Bill Woolston took over and was responsible for membership growth to over 70 in 1988, with a mature and well-organized seniors program. During Dick Allchin's tenure as Club Representative, membership peaked and stabilized at 95. Bob Dallmus succeeded Dick in 1991 and Charlie Fieldhouse took over in 1994 and is still MISGA Representative.

Hunt Valley holds seven mixers each year, five intra-division and 2 inter-division. In addition, four senior club events are organized each year. There is a joint mixed MISGA - Women's Golf Association event and a full field Member-Guest Two-Man Team event. 1994 was the 15th year for the Member-Guest event.

Walter Sibiski served on the MISGA Board in 1978. Vern Mergl served on MISGA's Board in 1979 and 1980. Bill Woolston served on the Board in 1981 - 1982 and 1987 - 1989; he was President of MISGA in 1982 and was Editor of the MISGAgam from 1983 to 1993. Dick Allchin served a four year term on the Board of Directors (1989 through 1993) and has been Division II Tournament Chairman since 1991

Charlie Fieldhouse and Dick Allchin

INDIAN SPRING COUNTRY CLUB

Indian Spring is a charter member of MISGA, entering in 1976. Harry Gershenson was the first Club representative and was elected and served in the first MISGA Board of Directors.

In the original agreement with ISCC Board of Governors, Mixers were to be restricted to twelve visitors and a like number from

ISCC, with a maximum of four mixers per season to be held at ISCC. Authorization was granted for the 1976 season and ISCC booked home and away mixers with Bethesda Country Club, Brooke Manor Country Club, Leisure World Country Club and Potomac Valley Country Club.

In 1978, Ben Frank took the MISGA Representative responsibilities assisted by John Rollins. Membership grew very slowly, never rising to more than 25 and participation in mixers was poor. In 1979, Buddy Robbins asked Herb Hudson to be his assistant.

In 1980, Ben Frank, of ISCC, indicated that he would like to be the ISCC Club Representative and was given the job. It was at this point that the ISCC MISGA associates began to grow rapidly. Frank worked diligently throughout the year and reached a total of 42 by the end of the year.

With the impetus started by Ben Frank in 1980, 1981 was an excellent year with the ISCC associates reaching 58. In the Spring of 1981, Hudson was elected by Division III Club Representatives to the position of Division III Director and a member of the Board of Directors.

The ISCC MISGA associates roster continued to grow to 66 by the end of 1982, 68 by the end of 1983 and 78 by 1984. Mixers expanded to seven at home and away. Participation has picked up, so that 30 or 40 can be expected at a mixer. Hudson was elected President of MISGA in 1982 and reelected in 1983.

In 1983, ISCC was the site of the MISGA 2-Man Team Championship, where 144 golfers vied for the trophy and prizes awarded. MISGA is indeed healthy and thriving at ISCC today.

Herb Hudson

Note: On March 2, 1995, Indian Spring Country Club was dropped from membership in MISGA because the management of ISCC would not give Herb any Mixer dates for 1995. Herb was ISCC's MISGA Representative for the past 10 years. Herb was personally responsible for putting MISGA's roster on computer disks. In 1982 and 1983, he entered names, addresses and club affiliations into his own personal computer, thus, making it possible to run off

mailing labels for all members of MISGA. Herb also served on various MISGA Committees over the past 10 years. His contribution to MISGA is greatly appreciated.

Merle Shumaker

KENWOOD GOLF & COUNTRY CLUB

Kenwood Golf & Country Club is located at 5601 River Road, Bethesda, MD, three miles south of the Capital Beltway (I-495). Senior's tees course rating is 67.6, with a slope of 112. Total yardage is 5,843.

Kenwood's seniors were pioneers in shaping club senior and junior golf programs. They also played a founding role in MISGA. The pioneers included T. Perry Lippitt, who served as the first MISGA Treasurer, Jack Weber, Joe Gambatese, Jim Somes, Bill Drake, Pat Boyle, Bill Wohlfarth and Jim Eliopolo.

In 1973, it was Eliopolo, as chairman of Kenwood's golf committee, and Weber, on the Board of Governors, who got a Senior's Program underway. As usual, that took the form of appointing a committee to study the matter. They proposed a day be set aside for seniors (55 and over) and that members be allowed to invite a guest without paying a green fee, but popping for a cart. Gambatese, who had been a leader in junior golf programs, helped develop the Senior's Program at Kenwood and for MISGA. He framed the first MISGAGram.

In the Spring of 1974, Kenwood invited Lakewood to bring 30 seniors over for what was the first Mixer. Lakewood invited Kenwood seniors back to their club later that year. That Fall, nine clubs in the area held an informal meeting at Kenwood to discuss the concept of MISGA. In February, 1976, the association was founded officially.

From the first two tournaments in 1974, Senior's golf at Kenwood grew to 12 in 1981 and by 1991 there were 38 events, 20 of which were Mixers with other clubs. Over the past years, Kenwood has led all clubs in number of members—from 104 in the first year to over 210 today, however, recently Ocean Pines membership has

exceeded Kenwood's. (The 1995 computer printout shows 214 paid associates for Kenwood and 239 for Ocean Pines).

Weber was Kenwood's first MISGA Representative (1976-82). Ray Keany served as MISGA Division IV Director (1982-86) and MISGA Historian (1986-present). Wayland Coston served as Division IV Director (1994-present).

Bill Wohlfarth

LAKWOOD COUNTRY CLUB

Lakewood is located 2 miles west of Rockville on Glen Mill Road, which dead ends on Route 28. Senior's tees course rating is 69.3, with a slope of 117. Total yardage is 6,154.

Senior golf activities at Lakewood had become extensive by 1975. The previous year Lakewood had participated with Kenwood Country Club in home-and-away mixers, and in 1975 Lakewood Seniors organized a number of interclub Mixers, including Kenwood, Army-Navy and Montgomery, member-guest outings and had established Wednesday morning as Seniors day. In preparing for the 1976 golf season, the Senior's Committee (Al Hagen, Chairman; William K. "Bud" Jackson, Secretary; and Ted Hayward) sent letters to some 18 Maryland clubs inviting them to attend an organizational meeting at Lakewood in January 1976. Representatives from the following clubs attended: Manor, Montgomery, Norbeck, Potomac Valley, Bethesda, Montgomery Village, River Bend, Prince Georges, Rossmoor (Leisure World), Argyle, Brooke Manor, Columbia, Eaglehead, Indian Spring, Kenwood and Congressional.

Many of the basic concepts of MISGA were agreed to at this meeting, and a second meeting was scheduled for February. At this February meeting and a subsequent one in March, all held at Lakewood, the rules and format for Mixers were set forth, the name Maryland Interclub Seniors Golf Association (MISGA) was chosen and officers elected. Al Hagen of Lakewood was the first President of MISGA and served in that capacity for five years, then as Executive Director and finally, in 1982, as President Emeritus

and a Life Member of MISGA. It is a source of pride to Lakewood that one of its members was the founder of MISGA and its President for so long. Al's name and address is still carried on the Lakewood MISGA roster.

Lakewood MISGA Associates had been growing in number at a rate of about ten percent per year and reached 115 in 1985. In the past few years, membership has been consistently around 100 Associates. Our Associates range in age between 55 and 90. We still have 41 active Associates from the 1981 roster of 115.

Lakewood and other clubs have tried to restrict Associates privileges from time to time. Such things as reducing the number of guests in Mixers and the number of Mixers allowed each season. So far the number of guests per mixer remains constant at 50 with a total count of 100 per mixer. We have been limited to seven MISGA Mixers at home per season. Our restrictions are reasonable compared with some of the other clubs.

Lakewood has maintained an active role in MISGA events through the years. Lakewood has been host to two MISGA Annual tournaments, in 1977 (with Potomac Valley) and again in 1981. Lakewood has also hosted the MISGA Scratch Tournament as well as Division IV events, the last being the finals in the 1994 Past Presidents Tournament. Lakewood has consistently sent one of the largest contingents to the Spring Fling, Fall Special Events, Florida Fling and various out-of-country excursions.

Bud Marshall of Lakewood Served as Secretary of MISGA from 1990 to 1993. He was elected to the Board of Directors in 1993 and served as Director of Division IV as well as Vice-President of MISGA for the years of 1993 and 1994.

Jack Hutson

LEISURE WORLD GOLF CLUB

Leisure World, a retirement community of nearly 6,000 condominium and cooperative homeowners, is located in Montgomery County just North of the Aspen Hill shopping center. It is on the East side of Georgia Avenue, Route 97 just South of Norbeck

Road, Route 28. Senior's tees course rating is 64.2, with a slope of 101. Total yardage is 5,119.

Leisure World (formally named Rossmoor) was one of the 12 Charter MISGA Clubs. Pat Patrizio, our original Representative and a MISGA Board Member in 1977, is still active in the program and routinely shoots his age.

As the Community expanded, so did the MISGA golfing membership. From the initial group of 30 Associates in 1976, Leisure World registered 154 Associates in 1994. The Club now has a golfing membership of close to 500. In 1982, in anticipation of the construction of several high-rise condominiums, a major revision was made to the course. Two new holes (#2 and #3) were constructed and one (#4) was reoriented. The course modification was completed several years later when #7, a challenging over water par 4, had to be converted for safety purposes into a par 3.

During the 1980's, Leisure World participated in Division III, Washington East, activities. A petition to be transferred to Division IV, Washington West, was approved effective with the 1992 season. George Fralley, Leisure World's MISGA Representative, served on the MISGA Realignment Committee. Ralph Laycock served as the MISGA Mailing Chairman for 11 years. Ed Abel served as Chairman of the Audit Committee for 15 years.

Leisure World has a very active program and averages seven home and away mixers each year. Beginning in 1987, Leisure World has hosted a Division Qualifying Event each year. The last two for Division IV. In 1995, Leisure World hosted the MISGA Two-Men Team Final.

Since our first Representative, the following Associates have served as MISGA Representatives for Leisure World: Bud Roubush, Joe Weber, Harry Barker, Roger Neetz, Al Craig and George Fralley.

George Fralley

MAPLE DALE COUNTRY CLUB

Maple Dale is an old, established Country Club located on the northwest edge of Dover. Senior's tees course rating is 69.7, with a slope of 121. Total yardage is 6,314.

Maple Dale was admitted to MISGA membership during the 1995 season. The course plays to a par 72.

During 1995, a major renovation of the clubhouse facilities is being completed, and when done will be one of Delaware's finest.

Leadership has been provided by Frank Traynor as Representative and George Frick as Assistant Representative. First year membership numbered 52 MISGA Associates and is expected to grow dramatically over the next few years.

Frank Traynor

MANOR COUNTRY CLUB

Manor is located in Rockville, MD near the intersection of Norbeck Road (Route 28) and Georgia Avenue (Route 97). Senior's tees course rating is 69.8 with a slope of 124. Total yardage is 6,111.

Manor Country Club's involvement with MISGA dates back to the origins of that organization. When Al Hagen's group circularized area clubs in 1975 to sound out interest in the concept of a Maryland Interclub Seniors Golf Association, the Chairman of Manor's Golf Committee referred the letter to the then head of the Club's senior golf program, Paul Dobrowolski.

Paul participated in the many meetings and discussions, most of them at Lakewood, that eventually developed the MISGA concept and developed it into the organization we know today. When the first slate of MISGA officers were elected in 1976, Al Hagen was elected President and Paul Dobrowolski vice President, an office he held for two years while serving concurrently as Manor's MISGA Representative.

At the inception of MISGA, Manor had perhaps 20 associates who participated in the early Mixers. In the mid 1980's, there were approximately 80 members of the Club's Senior Golf Association and it was often difficult to get more than 20 to 25 to participate in any given Mixer. Today we have over 180 members in the Senior Golf Association and usually fill up the allotted spots (approximately 40) in each Mixer, especially those away.

Paul Dobrowolski served as Manor's MISGA Representative in 1976 and 1977, assisted at various times by Stan Kerkering, Gus Saridakis, Ashby Smith, Spence King and Mel Fish. Each of these served as the MISGA Representative for two or three years until 1990 when Alton D. Anderson assumed the responsibility. Following Andy Anderson's death in October 1994, C. J. Myers was named our MISGA Representative assisted by Ralph Caudle.

During Andy Anderson's tenure, he not only ran an outstanding MISGA program at Manor (home and away Mixers), but he was very active in the organizing and arrangements for many of the Fall Frolics, such as Sea Trail and Foxfire in 1994. Andy also served on the Board of Directors, Division IV. The annual Division IV Holiday luncheon, hosted by Manor, was initiated by Andy a few years ago and will continue in his honor.

In September, 1995, C. J. Myers was elected to the Board of Directors, Division IV, to serve a four-year term, 1996 to 1999. He also was very involved in making arrangements for the highly successful 1995 Fall Frolic at Sea Trail, assisting Sam Hastings, Chairman, from Argyle Country Club.

C. J. Myers

MARLBOROUGH COUNTRY CLUB

Marlborough is located on the North side of Route 725, West of the town of Upper Marlboro. Senior's tees course rating is 67.5, with a slope of 120. Total yardage is 5,800.

In 1981, "Marlboro" Country Club joined MISGA but dropped out in a few years. Under new management, in March of 1993, Corky Devlin and Bill Baldrige arranged a meeting with MISGA Repre-

representatives Bob Ludwig, Merle Shumaker and Brad Frapart to discuss the process for becoming a MISGA member club. The meeting was attended by Head Pro Steve Jones and General Manager Tom Forbes. Application for membership was prepared and subsequently approved. On July 12, 1993, Marlborough hosted a welcoming Mixer for about 120 Division III Seniors. Corky Devlin was elected MISGA Representative and Bill Baldrige Assistant Representative.

After the Marlborough Country Club MISGA membership was approved in 1993, the Marlborough Seniors Men's Club was formed. First year membership was near 50 and good participation was experienced. Founding members Corky Devlin and Bill Baldrige were elected President and Treasurer, respectively, and Ives Moroney was elected Vice-President. In 1994, Jack Johnson, Club's Seniors Champion, became MISGA Representative. A full schedule of Mixers is planned for 1995 and thereafter.

In addition to the Officers and Representatives named above, Bob Povlovich, Jack Fealy and Charlie Greenwell served on a very effective Telephone Committee. The staff of the Pro Shop and Food Services at Marlborough were most helpful in making the Senior Mixers successful.

Corky Devlin

MONTGOMERY COUNTRY CLUB

Montgomery is located in Montgomery County on State Route 108, approximately five miles west of the intersection of Georgia Avenue (MD Route 97). Entrance to the Club is just before entering Laytonsville City limits. Senior's tees course rating is 69.6, with a slope of 115. Total yardage is 6,324.

Montgomery was one of the founding Clubs in MISGA, its membership dating from 1976. J. Neil Ryan and Keith Eynon were principally responsible for Montgomery Country Club joining MISGA. The First Club Representative was Art Siler. He was succeeded by Doug Moats in 1980 at which time there were 40 MISGA Associates. Under Doug's leadership that number had

doubled to 81 Associates in 1985. Montgomery had a slow, steady growth in Associates until 1994 when we picked up 35 members from Brooke Manor Country Club, which increased our membership in MISGA to 117 Associates.

Doug Moats was Club Representative from 1980 to 1991. He was appointed Chairman of the MISGA Tournament Committee in 1984 and held the job until 1990. He was Chairman of the Winter Fling at Fort Myers in 1986 and 1987, Chairman of the Fall Outing at Foxfire from 1985 to 1988 and Chairman of the Fall Outing at Sea Trail from 1989 to 1991. Doug was elected to a four-year term on the Board of Directors in 1990 and served as President for the MISGA year of 1994. He is the only person to hold an “Honorary Membership” status in Montgomery Country Club’s history.

Claude Widerman was appointed MISGA Historian in 1987 and held that job until 1989 when he was elected to a four-year term on the Board of Directors and as Director of Division IV. He was Assistant Chairman at outings at Fort Myers 1986-1987, Sea Trail 1989-1991 and Foxfire 1985-1988. Claude was a member of the MISGA Nominating Committee in 1993 and 1994.

Jim Lee was appointed MISGA Auditor in 1993 and served until 1995.

George Lipscomb (previously from Brooke Manor Country Club), joined Montgomery in 1994, was appointed Chairman of the MISGA Tournament Committee in 1992 and still holds that job.

Ted Walsh was Assistant Club Representative in 1990 and 1991, he was Club Representative from 1992 through 1995 and was Division IV Tournament Chairman from 1991 through 1995.

Ted Walsh

MONTGOMERY VILLAGE GOLF CLUB

Montgomery Village is located at 19550 Montgomery Village Avenue, Montgomery Village, MD 20879; 2.5 miles east of Route 270. Senior’s tees course rating is 70.9, with a slope of 124. Total yardage is 6,390.

Montgomery Village Golf Club was invited into MISGA in 1976. After the initial contacts with the Club, Frank Buddle was designated as Club Representative. He participated extensively in the initial format and policies of both the MVGC Seniors program and the MISGA organization and program.

Starting in 1977, Frank dedicated his efforts more to overall MISGA organization and activities including serving on the MISGA Board of Directors.

In 1977, Duane Swindle took over as Club Representative from Frank, and served as Club Representative through the 1982 season. He had substantial able assistance from several other members, principally Dave Wright, Gene Miller, George Wilson and Bill Hulihan. During this period, MVGC was privileged to host both Division and State MISGA Tournaments and participated fully in the MISGA Mixer Program. The Club's MISGA Associates numbered about 60 each year during this period from 1977 to 1985.

Duane was elected to the MISGA Board of Directors in 1982 for a two-year term. While on the Board, he served as Chairman of the Policy and Planning Committee. Under his Chairmanship, the Policy and Planning Committee made recommendations to the Board, which were accepted with regard to refunding funds to the Divisions for expenses and with regard to purchasing Liability Insurance and bonding MISGA personnel.

Along with Sam Hastings, Duane also set up the "Den Mothered" three Group Outings to Mexico, one in 1984 and two in 1985.

In 1982, Bill Hulihan took over as Club Representative and served as Club Representative until he was elected to the MISGA Board of Directors in 1988. Larry Falick then served as Club Rep with Herb Taggart as his assistant until he resigned at the end of the 1990 season. Bill Hulihan again became the Representative and has served in that capacity since.

When Washingtonian Golf Club closed in 1984, several of their Seniors moved to Montgomery Village Golf Club and average membership climbed to around 80 members. Since then, closing of other clubs such as Germantown and Brooke Manor have helped

to increase the Senior membership. Currently, there are 144 MISGA members from Montgomery Village, and Bill has two Assistants to help him run the program, Herb Taggart and Bill Smith.

After election to the Board, Bill Hulihan served as Vice-President in 1988 and as President in 1989. As Vice-President, he and then President Bob Fuchs introduced a Code of Conduct for MISGA. They were assisted by Joe Malinowski, who became the first General Counsel for MISGA. Bill was also instrumental in compiling a Handbook for Club Representatives that assists them in conforming to the MISGA rules and regulations.

Besides Joe Malinowski, other Montgomery Village members who have served and are currently serving on the Board are: Roy Gauzza, the Associate Chairman, and Ted Branthover, Chairman of the Policy and Planning Committee. Since leaving the Board, Bill Hulihan has served on two special committees. One of them drew up the guidelines for presenting awards to MISGA members who have served the organization in different capacities. The second is in the process of getting out this updated MISGA History.

Bill Hulihan

NASSAWANGO COUNTRY CLUB

Nassawango is located on the north side of the Pocomoke River between Pocomoke and Snow Hill, MD. Senior's tees course rating is 70.19, with a slope of 123. Total yardage is 6,344.

In January 1977, Nassawango received a letter from Al Hagen suggesting a meeting the following month. Bill Grant was appointed to attend. It was at this time that Bill worked up a schedule and Nassawango joined MISGA in May 1977. Bill Grant became our first MISGA Representative.

At the beginning, Nassawango had about 25 Associates. This number grew to about 95 through the 1980's. However, at this time we have 50 Associates. This is due to a changing club membership. Beginning in 1984, Nassawango and Green Hill have hosted the MISGA Spring Fling special event through 1992, nine

consecutive year, and we are scheduled again for 1995. The Better Ball of Partners Qualifier for Division I was held here in 1994.

Dick Bevan, a long time associate of Nassawango and MISGA, was our assistant Representative in 1986 and MISGA Representative from 1987 to 1991. Dick was elected Director of Division I for a four-year term and took office on the MISGA Board of Directors on October 1, 1990. He was elected Vice-President of MISGA for the 1992 MISGA year and President for 1993.

Leon Weidema

NORBECK COUNTRY CLUB

Norbeck is located at 17200 Cash ell Road about .5 miles west of Georgia Avenue at Hines Road in Rockville, MD. Senior's tees course rating is 71.2, with a slope rating of 127. Total yardage is 6,418 over rolling terrain; with mature trees, lakes and streams.

Norbeck joined MISGA in 1984 with 25 Associates. Max Posing was our Club Representative and Matt Groff the Assistant Representative. We have enjoyed a steady, if slow, growth rate to our present 56 Associates.

The one common factor in all comments about our association with MISGA is, "a good time was had by all". This is true for all our participants in interclub events, tournaments and outings.

Our immediate past Club Representatives, were Bob Miller, Representative with Arnie Rosenbaum as his assistant. As of the 1995 season, Arnie is the Club Representative with Max Posin back in as Assistant

Arnie Rosenbaum

NUTTERS CROSSING GOLF CLUB

Nutters Crossing is located 1.5 miles southeast of Salisbury, MD on Route 12. Senior's tees course rating is 65.3, with a slope of 112. Total yardage is 5,668.

In 1992, we were accepted into MISGA and assigned to Division I. Our first Mixer started in April, and we had 32 Mixers in the following year.

Sam Pope, David Day, and Bob Parsons originally met with owner Tom Ruark to set up a MISGA program. Meetings were held prior to acceptance for election of officers. Leo Welch was elected MISGA Club Representative.

The first year, 1992, we had 55 MISGA Associates with a full slate of Mixers. In 1993, we showed an increase of members to a total of 69. In 1994, membership increased to 70 and we had a full slate of Mixers.

Since Nutters Crossing joined MISGA, we have hosted the lady golfers when the Spring Fling was held at Green Hill and Nassawango.

Sam Pope and Leo Welch

OCEAN CITY GOLF & YACHT CLUB

Ocean City is located at 11401 Country Club Drive, Berlin, MD, south on Route 611 from Route 50, approximately five miles. Senior's tees course rating on the Seaside 18 is 69.7, with a slope of 112. Total yardage is 6,252. Senior's tees course rating on the Bayside 18 is 70.2, with a slope of 118. Total yardage is 6,211.

Ocean City became a member of MISGA in December of 1979. "Bo" Quillin was instrumental in investigating the possibilities of a senior's group and learned of MISGA at that time. Bob Phillips was the first Club Representative and Red Green was his assistant. There followed a number of persons who filled the office of Club Representative with Red Green acting as Assistant Representative or Club Representative over a period of 15 years. Tom Exarhakis is currently the Club Representative.

Ocean City members have been very active participants since the beginning and currently we have about 107 MISGA Associates.

In 1981 and 1982, Ocean City hosted the ladies for the MISGA Spring Fling. In 1993 and 1994, Ocean City hosted the entire

event. We had a full compliment of golfers on the Bayside and Seaside courses. It was the largest number of Associates ever to attend a MISGA Spring Fling.

Jack Glover was appointed and served as Secretary of MISGA for the year of 1987.

Red Green and Tom Exarhakis

OCEAN PINES GOLF CLUB

Ocean Pines is located in Ocean Pines, MD, just south of Route 90. Senior's tees course rating is 70.7, with a slope of 122. Total yardage is 6,308.

Ocean Pines became a member club in the MISGA organization in 1980. Chet Smith was president of the Men's Golf Association that year and Charlie Grimes was our first MISGA Representative.

Ocean Pines started with a MISGA membership of 55 and has grown steadily over the years to our current membership of 239. This is the largest group of Associates in MISGA.

In 1994, Ocean Pines hosted the Past Presidents Qualifying Tournament for Division I. Paul Desmond was appointed Secretary of MISGA for the year of 1995.

Paul J. Desmond

PATUXENT GREENS COUNTRY CLUB

Patuxent Greens is located in Laurel, MD on Route 197 about .4 miles south of Route 198. The middle (white) tees course rating is 69.6, with a slope of 124. Total yardage is 6,201.

After several overtures from MISGA in 1990 and 1991 which came to naught primarily due to the negative reaction of the Club Pro at the time, in 1992, Merle Shumaker and several members of the MISGA Board met with a group of Patuxent Greens Seniors, the Club Pro and Management of Patuxent Greens. As a result of this meeting, Patuxent Greens Country Club applied for membership in MISGA. The Seniors organized the Patuxent Greens Sen-

ior Men's Golf Association and elected Dick Purkiser President and Paul Barritt Treasurer. After our application was accepted by MISGA at the Board Meeting of July 14, 1992, Jim Bell was named MISGA Representative.

During 1992 and 1993, the number of MISGA Associates was extremely small (about 20). However, in the Fall of 1993, Brooke Manor Country closed and as a result, many of their seniors joined Patuxent Greens. The membership for 1994 immediately increased to 56 and approximately five more joined over the course of the 1994 season. The Brooke Manor Seniors had always been an enthusiastic group in supporting MISGA and they brought this enthusiasm with them to Patuxent Greens. We schedule six to eight Mixers each year. Jim Bell is still MISGA Representative.

We are too new to MISGA to have any Board Members, however Marks Jaillite is now a member of Patuxent Greens (see Brooke Manor Country Club history). Jim Bell has served as Chairman and host of the Seabrook Safari since its inception in 1993, which included both a Spring and Fall Special Outing in 1995. Prior to moving to Patuxent Greens, he was a MISGA Representative at Hobbits Glen for several years and Treasurer and Chairman of the Jekyll Junket from its beginning in 1986 until he left Hobbits Glen in 1990.

Jim Bell

PINEY BRANCH GOLF & COUNTRY CLUB

Piney Branch is located at 5301 Trenton Mill Road in Hampstead, MD, about 3 miles south of town, off State Route 30. Senior's tees course rating is 73.2 with a slope of 126. Total yardage is 6,743.

In 1980, Piney Branch became a member of MISGA under the leadership of Mel Gesell, who was our first Club Representative. Barney Corbett became the MISGA Representative in 1981. Elmer Bright became the next Representative and organized the Piney Branch MISGA Seniors organization. John Edwards was elected Secretary and Gordon Knapp, Treasurer. After serving three years as Representative, Elmer was relieved by Jim Kristoff.

For the next series of years, the Representatives were Bill Davis, Mel Wright, Bill Moore, and Gene Olsen.

In 1981, Mel Gesell was elected Director of Division II and served on the MISGA Board of Directors for two years. Mel passed away in 1992.

Gene Olsen

POTOMAC COUNTRY CLUB

(formerly PortAmerica and Tantallon)

Potomac is located on St. Andrew's Drive in the Tantallon subdivision of Fort Washington, 2.5 miles from the intersection of MD Route 210 and Fort Washington Drive. Senior's tees course rating is 68.9, with a slope of 119. Total yardage is 6093.

PortAmerica Golf & Country Club has been renamed Potomac Country Club. The course and facilities are part of the original Tantallon development which was to include, among other things, a marina, single-family housing, a high rise or two, a boat motel, and two 18-hole golf courses. The housing and marina were realized, but only one 18-hole course as built.

The club was known as Tantallon Country Club from its inception in 1961 until 1989 when it was sold to prospective partners of the Port America project. Ironically, the name change of the club from Tantallon to Port America coincided with the demise of Port America development itself. Rather than continue an erroneous association with the defunct development, it was decided in January 1995, to change the name to Potomac Country Club, thus capitalizing on the club's proximity to the Potomac River.

Potomac's first contact with MISGA was through Al Hagen of Lakewood who, in 1976, called to explain "mixers" and to ask if the members would like to play in them. They readily accepted. The first full season, in 1977, included matches with Brooke Manor, Montgomery, and Bethesda. The club's original MISGA membership of 12 grew and now remains constant at about 55 members.

MISGA responsibilities were originally handled in the 1977-87 time froma by the trio of Bob Evans, Bob Noonan and the late Rex Nelson. Rex Nelson was the MISGA Representative from 1977-1982; Bob Evans from 1982 to 1987. In 1987, Mike Licitra became the club's MISGA representative with continued assistance from Bob Noonan. Sam Hall assumed the Representative responsibilities in late 1994.

Lloyd Stimson

PROSPECT BAY COUNTRY CLUB

Prospect Bay is located approximately seven miles from the east end of the Bay Bridge, in the town of Grasonville, MD. Senior's tees course rating is 69.0, with a slope of 116. Total yardage is 6,213.

Prospect Bay was formally approved as a MISGA member club on January 26, 1983. Carl Blakely was the first MISGA Representative and Bud Clevenger was his assistant.

When Prospect Bay became a MISGA member in 1983, there were 15 Seniors. By 1987, the number had increased to 70 associates, and now stands at 88. Carl Blakely, assisted by Bud Clevenger, managed all aspects of MISGA at Prospect Bay from 1983 through 1987. Pursuant to recommendations of an Ad Hoc planning committee, a formal proposed organization was adopted by the Prospect Bay Associates in 1987. This organization, consisting of seven key officers, known as the MISGA Executive Board, now runs every aspect of MISGA at Prospect Bay. Duke Rowdon and Maury Labille were the Club Representative and assistant Representative from 1988 through 1991. In 1992 and 1993, Maury Labille was the Representative, with Bob Brady as assistant in 1992 and Don Brannon in 1993. In 1994, Duke Rowdon re-assumed the Club Representative position upon Maury's departure from the area. Bill Seeds became the Club Representative In 1995. Don Brannon remains the assistant Representative.

Prospect Bay MISGA Seniors enjoy a full schedule of 35 home and away mixers with 14 of the clubs in Division I, plus 2 clubs on

the Western Shore. In addition, the Seniors enjoy a yearly mixer with the 18-hole ladies and another mixer with the 9-hole ladies.

In 1983, Prospect Bay co-hosted the MISGA Spring Fling with Talbot Country Club and the Past Presidents Division qualifier in 1995. In 1994, Duke Rowdon was elected Director of Division I for a term of 4 years and took his seat on the MISGA Board of Directors on October 1, 1994.

Duke Rowdon

QUAIL VALLEY GOLF CLUB

Quail Valley is located about 4 miles west of Littlestown PA. The address is 901 Teeter Road, Littlestown, PA 17340. Senior's tees course rating is 69.1, with a slope of 111. Total yardage is 5,788.

Quail Valley was approved for membership in MISGA in 1993. We started the Mixer schedule in April of 1994. George King was the first MISGA Representative. The PGA Pro is Jim Hayes, who gives much assistance in preparing for Mixers.

George King

ROLLING ROAD GOLF CLUB

Rolling Road is located about one mile southwest of exit 12 of I-695 (Baltimore Beltway). Entrance to the Club is on Hilltop Road. Senior's tees course rating is 69.1, with a slope of 119. Total yardage is 6,134.

Rolling Road Golf Club was chartered in 1919. From 1919 to 1922 it was a nine-hole course. The second nine opened in 1922, using a farmhouse built in 1881 as the Club House. In 1958, the members bought the property from the owner.

It was 1978 when John McDonald organized the Seniors and joined MISGA in 1979. John was the first Representative, assisted by Ben Long and Ken Karr. In 1983, Mike Penyak took over as Club Representative. Lew Baumann assisted Mike in 1984 and took over as Representative in 1985. He was assisted by Frank Page, who became Club Representative in 1987 and remained Club

Representative until 1993. He was assisted by Roger Connor. Then Dick Hunt became Club Representative. He is assisted by Vernon Walker.

In August, 1987, the clubhouse was severely damaged by a fire, causing the MISGA Mixer lunches to be catered for the rest of the year. From 1988 through 1991, the buffet lunches were set up under a large tent. Our new clubhouse opened in November, 1991 and has made eating our noon MISGA meals a real class operation.

Our MISGA membership in 1985 was 73 associates. For the last five years, the membership has been 90 to 95. We play 10 home and away Mixers each year with a participation of 35 to 40 Rolling Road golfers.

In 1989, Rolling Road hosted the Division II ABCD tournament, and, in 1993, we hosted the MISGA Two-Man Team championship tournament. In 1993, Frank Page was elected to a four-year term as Director of Division II and took his seat on the MISGA Board of Directors on October 1, 1993.

Dick Hunt

SEAFORD COUNTRY CLUB

Seaford is located on the Southeast edge of Seaford, Delaware, northeast of the DuPont Plant. The entrance to the Club is on Locust Street. Senior's tees course rating is 69.3, with a slope of 118. Total yardage is 6,321.

Seaford, being located in Delaware, caused some difficulty because the MISGA By-Laws specified only Maryland Clubs as eligible for membership. However, the By-Laws were changed, largely through the efforts of Ed Schmidt (Talbot), Reed Kurtz (Green Hill) and Allen Echel (Cambridge). Nearby USGA member Clubs may now join MISGA upon approval of the Board.

Seaford joined MISGA in 1978 with Dan Crader as the first Club Representative and sported a total of 33 members. The membership grew steadily to 100 in 1990. In 1995, a decision by the Club

Board and supported by the Club membership was made to expand from a nine hole to an eighteen hole course. This required a dues increase and a capital commitment from each member family. This move resulted in a significant number of dropouts in club membership with a drop in MISGA membership as well. MISGA membership in 1995 has dropped to just under 100 from the 1994 high of 111 members.

When Dan Crader was transferred, Stu Sargent took over as Club Representative in 1980 with Bob Whitman as his assistant. Upon Stu's untimely demise in 1986, Bob Whitman took over with the help of assistants Carlton Tull and Ken Madden. For health reasons, Bob Whitman felt compelled to pass the reins to Ken Madden in 1995 and he is assisted by Carlton Tull and Ernie Makowski.

Ken Madden

SHAWNEE COUNTRY CLUB

Shawnee is located on the southeast edge of the town of Milford, Delaware, on Rehoboth Highway (business Route 1). Senior's tees course rating is 68.8, with a slope of 119. Total yardage is 6,062.

In 1979, through the efforts of a local businessman, Lou Pikus, and his association with friends in Salisbury and Easton, Shawnee applied for membership as one of the Delaware clubs in this Maryland organization. Shawnee was accepted as one of the three Delaware Clubs, all of which were nine holes at that time. Lou became the first Representative, the secretary, recruiter, treasurer, and any other position that needed filling.

The organization was a complete success from the beginning. The enthusiasm of Lou and all of the original forty some members overshadowed all adversities, such as cart shortages, scheduling mix-ups, etc. We grew rapidly; the back nine was completed and MISGA members planted and watered trees by hand for several years. Bill Yonker became Representative, MISGA was put on the computer, and the membership grew to over 120. Dave Blyth took over the reins for several years until 1991 when Roger Wooleyhan

became the MISGA Representative, he was followed by Ray Bryan in 1995. Membership has grown now to over 130 Associates.

Bill Yonker

SPARROWS POINT COUNTRY CLUB

Sparrows Point is located on the East side of Baltimore, Maryland, about 1.5 miles from exit 41 on I-695 (Baltimore Beltway). The entrance to the Club is on Wise Avenue. Senior's tees course rating is 67.8, with a slope of 114. Total yardage is 5,892.

Sparrows Point was proposed for membership in MISGA by the Hunt Valley Club in 1979 when the Club was owned by the Bethlehem Steel Company (it is now owned by the membership). In our first year we had 105 MISGA Associates. Frank Bucharewicz was our first MISGA Club Representative and he held that office for the next thirteen years. In 1991, Josh Zahurak became our Representative and served in that office for two years. Josh has been the Treasurer of our MISGA group for the past five years. In 1993, Charlie Barker assumed the role of MISGA Representative and still serves in that capacity. Our 1994 membership was 75 Associates.

Sparrows Point Country Club members won the Annual Two-Men Team Tournament in 1980, 1984 and 1985. We also hosted two Division II tournaments. Our 27-hole layout has undergone many renovations in the past four years. A new fairway watering system was installed and this year we are in the last stage of planting all our fairways with Bent grass. The enlargement of many tee boxes will give better access to our narrow tree lined fairways. Several greens have also been completely rebuilt. The golf course and Clubhouse improvements will make Sparrows Point Country Club one of the finest clubs in the greater Baltimore area.

Charles L. Barker

SUSSEX PINES COUNTRY CLUB

Sussex Pines is located about two miles South of Georgetown, Delaware, off Route 324. Senior's tees course rating is 70.2, with a slope of 120. Total yardage is 6,401.

Sussex Pines was accepted into MISGA in 1982. Early leadership was provided by Frank Poland and Lewis Eberly who also served as co-representative. The first Mixers were played in 1983. Following Poland and Eberly, Bill Rutherford was Club Representative. He was succeeded in 1989 by Otis Jefferson, who turned over the representative's responsibility to Jim Thompson in 1994.

In 1983, Sussex Pines MISGA numbered 45 members. At the start of the 1994 season, membership had grown to 159, making Sussex Pines the second largest in Division I. Part of this growth was caused by the addition of nine holes and a million dollar plus Club House and partly due to aggressive leadership in recruiting new members into MISGA's ranks.

Two members of Sussex Pines have served on the MISGA board of Directors. Charles Szymanski served as a Board member from 1988 to 1992. In 1992, Otis Jefferson was elected to a four term on the Board of Directors and became Division I Director in 1994. In addition, he has served as Division I Tournament Chairman since 1992. Otis was elected by his fellow Board members to be President for MISGA year 1995. In 1992, Sussex Pines hosted the first Past Presidents Tournament and in 1994, hosted the better Ball of Partners (Two-Man Team) Championship.

Otis Jefferson

TALBOT COUNTRY CLUB

Talbot is located on the west side of MD Route 333, about five miles South of the intersection of MD Routes 322 and 333. Senior's tees course rating is 66.5 with a slope of 110. Total yardage is 5,627.

Prior to MISGA, Talbot Country Club had a men's golf group known as Retired Old Golfers. The ROGs met each Tuesday and

formed their own games. On November 30, 1976, President Al Hagen and other MISGA officials met at Talbot with five other clubs on the Eastern Shore to explain the advantages of MISGA and to recruit them to join. The concept of MISGA was presented to the Board of Governors of Talbot Country Club by Ed Schmidt in December 1976 and in 1977 Talbot became one of the original six clubs on the Eastern Shore to join MISGA. Ed Schmidt was the Representative, assisted by Peter Sivess.

In 1977, Talbot hosted five Mixers and had approximately 25 Associates. As other clubs on the Eastern Shore have joined MISGA in the following years, the number of Division I Clubs grew to the present 19 Clubs. Talbot now has 12 away Mixers and hosts seven home Mixers, each with two visiting Clubs. Starting with 25 to 30 seniors, Talbot now has 70 MISGA Associates. Ed Schmidt was the Club Representative from 1977 to 1987 and was assisted by George Brown, who relieved Ed in 1987.

In 1979, Ed Schmidt set up the first MISGA Board meeting on the Eastern Shore at Talbot Country Club. He served as Vice-President in 1980, as President in 1981 and as a holdover member of the Board in 1982. He organized the 1982 Annual Tournament, which was held at Talbot and on the Committee for the MISGA Spring Fling in 1983 that was hosted by Talbot and Prospect Bay. He was doing what he liked best - playing golf - when he passed away in 1989. He was a true leader of MISGA.

The Annual Club Representatives meeting was held at Talbot in 1992. The Division I Two-Man Team qualifying tournament was hosted by Talbot in 1993.

Ray Kroeger

UNIVERSITY OF MARYLAND SENIORS GOLF ASSOCIATION

UMSGA is located at the University of Maryland Golf Course, College Park, MD 20741-0295. Senior's tees course rating is 69.5, with a slope of 116. Total yardage is 6,271

Gil Williams, with the support of several senior golfers was instrumental in organizing the University of Maryland Seniors Golf Association, UMSGGA, in December 1978. UMSGGA, under the leadership of Gil Williams, was primarily conceived as a prelude for joining MISGA in 1979. Wallace Pederson served as our first MISGA Representative.

UMSGGA has strongly supported MISGA's goals and events. The MISGA Associate membership has grown from approximately 50 initial members in 1979 to between 105 and 125 from 1985 to the present. Each year we schedule five to seven MISGA Mixers of 72 players as allowed by a supportive Course Management. We have hosted Two-Man Team Division III Championships in 1987 and 1993.

Since the inception of UMSGGA, the Maryland Seniors became involved in sponsoring a yearly Junior Golf Tournament and conducting a raffle to raise money for the University of Maryland golf team. We have pursued a golf course improvement program: planted Azaleas and Dogwood trees, financed the construction of fences and a gazebo, purchased a TV, golf course flags and a flag pole, purchased and installed 150 yard markers and made many other golf course and club house improvements.

UMSGGA Presidents who also served as MISGA Representatives were: Gil Williams – 1979, Tom Hieber – 1980, Mark Leonard – 1981, Sam Wolk – 1982, Ed phillips – 1983, Dick Quinn – 1984, Bob Ludwig – 1985, Jim Norton – 1986, Herb Randall – 1987, Norm Czajkowski – 1988, Irv Raines – 1989, John Beaton – 1990, Lew Bruffy – 1991, Landy Altman – 1992, Bill Allison – 1993, Dick Gohla – 1994, Ray Rebois – 1995.

Gil Williams was appointed as Chairman of the Operations Committee in 1980, elected Assistant Executive Director in 1981, served on the Board of Directors from 1981 to 1987, was elected Vice President of MISGA in 1985 and President in 1986, was Director of Division III from 1984 to 1987 and was a member of various Committees until his death on December 1, 1993.

Bob Ludwig was elected to a four year term as Director of Division III in 1991 and served on the Board until 1994.

Dick Quinn was appointed Chairman of the Associates Committee and served from 1986 to 1988.

Sam Wolk served as Chairman of the Mailing Committee in 1986 and 1987.

In 1991, Norm Czajkowski served as Division III Associates Chairman and Lew Bruffy took the job for 1992 and 1993.

Raymond Rebois

U.S. NAVAL ACADEMY GOLF CLUB

Navy is located northeast of Annapolis, MD, across the Severn River on Greenbury Point Road west of Mills Creek. Senior's tees course rating is 68.8, with a slope of 118. Total yardage is 5,974.

In 1983, Rear Admiral Ernest E. Christensen, USN (Retired), was invited to a MISGA mixer at Crofton Country Club by Merle Shumaker. As a result, Christensen became interested in MISGA. After discussions with the Navy Seniors Group membership, he was delegated to contact the Superintendent of the Naval Academy and the U.S.N.A. Golf Association to obtain permission for the group to participate in home and away mixers with MISGA clubs. Christensen then spearheaded an application through MISGA channels for the group's membership in MISGA. The Navy Seniors' application was approved in April of 1984.

Christensen was Navy's MISGA Representative for two years. He has been succeeded in turn by Marvin Lynch, George Shenk Sr., George Hayman, Ned Weinke, Charlie Miller, and Al Slafkosky. In 1984, the original Navy Seniors Group had 55 MISGA members. The MISGA membership has grown steadily each year so that currently it has reached a very robust 140 members. Not only do the members thoroughly enjoy the home and away mixers, but a representative number have attended MISGA Special Events, especially those at Sea Trail, Jekyll Island, Cape Coral and Seabrook Island.

In 1985, Ernie Christensen was elected to a three-year term on the Board of Directors. Unfortunately, he died (while playing golf) during his last year in office. In 1994, George Shenk Sr. was elected to a four-year term as Director of Division III and took his seat on the Board of Directors on October 1, 1994. He will be assisted by his Associate Director George Hayman. On July 6, 1994, the Naval Academy Golf Club hosted a very successful Division III qualifying Past Presidents Tournament with 128 participants.

Al Slafkosky

V.F.W. GOLF CLUB

V.F.W is located in the western section of Frederick, MD, on the south side of US Route 40. Senior's tees course rating is 67.9, with a slope of 121. Total yardage is 6,011.

V.F.W. Golf Club opened on Memorial Day, 1924. V.F.W. joined MISGA in 1977 under the leadership of Robert Harrington, who was our first MISGA Representative. Our original membership was 92 out of a total Club membership of 380.

V.F.W. has always had a full schedule of at least ten home and ten away Mixers; plus our participation in Divisional and MISGA wide tournaments. Numerous members participate in MISGA Special Events in the spring, fall and winter. Our 9-hole course, with 18 tees, has proven adequately difficult for even the best seniors; while coffee and donuts in our large gazebo, and especially the hot buffet lunches served by our Dutch's Daughter Restaurant affiliate, always pleases visiting Seniors at V.F.W.

Since joining MISGA, the following seniors have been MISGA Representatives at V.F.W.: Robert Harrington, James McLaren, Kenneth Palmer, Edward Siedling, William B. Lebherz, Fred W. Shaffer, Harold T. Brandenburg, Vern M. Glaser and G. William Stultz. Fred Shaffer served on the MISGA Board of Directors from 1988 to 1992. He was elected Vice-President of MISGA in 1991 and President in 1992. Fred also was Chairman of the Nominating Committee in 1993 and is presently the Division II Repre-

sentative on the History Committee, which is in the process of producing this updated version.

William B. Leberherz

WAKEFIELD VALLEY COUNTRY CLUB

Wakefield Valley is located just west of Westminster, MD. The course address is: 1000 Fenby Farm Road, Westminster, MD 21157. It has 27 holes divided into 3 sets of nine holes: White, Gold and Green. Senior's course rating slope and total yardage are: White & Gold - 68.4, 124and 5,790; Gold and Green - 69.9, 130and 5,957; Green and White - 69.1, 128and 5,923.

Wakefield Valley was admitted to membership in MISGA in April of 1981. The Golf Course had been constructed several years previously by Dr. Earl Griswold who owned the land.

Mel Gesell, with the enthusiastic support of Club Pro Bill Horney, outlined the advantages of belonging to MISGA to about 20 Seniors. They were quick to see the potential good times available under the organization programs, and application for membership was made. Mel was elected Club Representative and Shorty De-Foe served as assistant.

In 1982, Dick Reese became Club Representative, followed in 1983 by Ed Kenney, with George White as assistant. In 1984, George White became Club Representative.

George White

WALDEN GOLF CLUB

Walden is located at 1500 Riedel Road, Crofton, MD. Senior's tees course rating is 69.4, with a slope of 122. Total yardage is 5,947.

Walden Golf Club was accepted into MISGA on March 2, 1995. Stan Stearns, Bob Burkhart, Grover Barham, Pat Rhodes and Jack Lamdin have been building membership in the Walden seniors group since 1993. Stan Stearns is the first MISGA Club Representative.

The Walden Senior Men's Golf Group has grown from a dozen members two years ago to a membership of 32 in May 1995. The Walden MISGA Associates will play 11 MISGA Mixers with other clubs this year.

Ray Gill

WESTWINDS COUNTRY CLUB

(formerly Eaglehead)

Westwinds is located three miles North of New Market, MD, and is directly adjacent to Gas House Pike, nine miles east of Frederick City. Senior's tees course rating is 68.9, with a slope of 117. Total yardage is 5,653.

Westwinds (then Eaglehead) joined MISGA in 1976 under the able leadership of Bill Dorrell with the full endorsement of club management and support of the pro shop. Dorrell was acclaimed by the associates as the first Club Representative nurturing our small club enrollment with the assistance of Marlowe Cline and Don Falconer.

Beginning in 1976, the number of Senior Associates grew from fewer than twenty to a maximum of 55 by 1988. In addition, the number of club mixers was increased to about 12 per season with a proportionate increase in participation in MISGA tournaments and outings. The burgeoning interest was due largely to the effective leadership of Dorrell Bob Angelo and Chet Petranek, who served successively as Club Representatives.

A change in Club ownership occurred in late 1988, followed by an increase in club dues and a capitalization fee for all Westwinds members. These policy changes sparked an exodus of several senior MISGA Associates, reducing our MISGA enrollment to fewer than 35.

Notwithstanding these membership losses, the new club management has supported MISGA and has hosted all Mixers and MISGA activities with enthusiastic cooperation from the pro shop and the food manager. Throughout those adjustments, the yeoman-like

efforts of Chet Petranek, Tom Tarpley (1994) and Jack De Vault (1995-1996) serving as Club Representatives have set a positive tone in the relationship with Westwinds management.

A number of MISGA Associates from Westwinds (Eaglehead) have made significant contributions to the organization and management of MISGA. Bill Dorrell served as a member of the original committee which organized and expanded MISGA from 1976 to 1982. Ted Hayward served as Secretary of MISGA (1981 - 1987). During that term, he edited and supervised the publication of "A HISTORY OF MISGA 1976 - 1985". Don Falconer served on the MISGA Board and as Director of Division II (1984 - 1986). During this time, his committee (Policy and Planning) revised and rewrote the Constitution and By-Laws of MISGA. Bob Fuchs served on the Board from Division II (1986 - 1988). He was elected President of MISGA for the year 1988. Bob currently served on the Awards Committee in 1994.

Don Falconer

THE COUNTRY CLUB AT WOODMORE

Woodmore is located off Woodmore Road one block from Enterprise Road (Route 193) in Mitchellville, MD. Senior's tees course rating is 70.1, with a slope of 126. Total yardage is 6,195.

Woodmore, formerly known as Prince Georges Country Club, joined MISGA in 1977. The first Club Representative was Elmer Johnson, who was followed by Dick Cain, who served from 1978 to 1984. Ernie Hauser took over from 1985 to 1989. Brad Frapart became Club Representative from 1990 - 1992 and Dave Buckner filled the office in 1993 and 1994. Currently, Clif Eisele, assisted by Jim Muluihill is the MISGA Representative.

Woodmore averages around 40 MISGA Associates and plays a full schedule of Mixers.

Ernie Hauser served as treasurer for the MISGA Special Outing at Jekyll Island in 1988 and 1989. Brad Frapart was elected to the Board of Directors for a four-year term in 1992. He has also served as treasurer and Events Chairman for the Jekyll Island Out-

ing since 1992. In 1994, he took the job of Division III Tournament Chairman.

Clif Eisele

APPENDIX A

MISGA Charter Clubs And Representatives

Founding Meeting, February 24, 1976

Bethesda CC	John McManus Herb Rudd
Brooke Manor CC	Cliff Andrews
Congressional CC	Earl Audette
Eaglehead CC (Now Westwinds CC)	Bill Dorrell
Indian Spring CC	Harry Gershenson
Kenwood G&CC	Perry Lippitt Jack Weber
Lakewood CC	Al Hagen Ted Hayward Bud Jackson
Manor CC	Paul Dobrolowski
Montgomery CC	Neil Ryan
Montgomery Village CC	Ed Fitzgerald
Potomac Valley CC	Wally Sager
Rossmoor GC (Now Leisure World GC)	Pat Patrizio George Felice

APPENDIX B

MISGA Officers and Board Members 1976-1995

	1976
President	Al Hagen (Lakewood)
Vice-President	Paul Dobrolowski (Manor)
Secy.-Treasurer	Perry Lippitt (Kenwood)
Board Members	Max Ryan (Montgomery), Wally Sager (Potomac Valley)
	1977
President	Al Hagen (Lakewood)
Vice-President	Paul Dobrolowski (Manor)
Secy.-Treasurer	Perry Lippitt (Kenwood)
Board Members	Cliff Andrews (Brooke Manor), Bill Dorrell (Eaglehead), Harry Gershenson (Indian Spring), Pat Patrizio (Rossmoor), Herb Rudd (Bethesda), Max Ryan (Montgomery), Wally Sager (Potomac Valley)
	1978
President	Al Hagen (Lakewood)
Vice-President	Bill Dorrell (Eaglehead)
Secretary	Neill Turner (Brooke Manor)
Treasurer	Perry Lippitt (Kenwood)
Board Members	Frank Buddle (Montgomery Village), Paul Dobrolowski (Manor), Allen Eckel (Cambridge), Wally Sager (Potomac Valley), Walt Sibiski (Hunt Valley)
Editor MISGAgram	Ted Hayward (Lakewood), Communications Consultant: Joe Gambatese (Kenwood)
	1979
President	Al Hagen (Lakewood)
Vice-President	Bill Dorrell (Eaglehead)
Secretary	Neill Turner (Brooke Manor)
Treasurer	Perry Lippitt (Kenwood)
Board Members	Frank Buddle (Montgomery Village), Allen Eckel (Cambridge), George Fisher (Beaver Creek), John McManus (Bethesda), Vern Mergl (Hunt Valley), Wally Sager (Potomac)

Valley)
Editor MISGAgam Ted Hayward (Lakewood), Communica-
tions Consultant: Joe Gambatese (Kenwood)

1980

President Al Hagen (Lakewood)
Vice-President Ed Schmidt (Talbot)
Secretary Neill Turner (Brooke Manor)
Treasurer Perry Lippitt (Kenwood)
Board Members Frank Buddle (Montgomery Village), Allen
Eckel (Cambridge), George Fisher (Beaver
Creek), Vern Mergl (Hunt Valley), Wally
Sager (Potomac Valley)
Editor MISGAgam Joe Gambatese (Kenwood)

1981

President Ed Schmidt (Talbot)
Vice-President Neill Turner (Brooke Manor)
Secretary Dave Watson (Argyle)
Treasurer Sid Rapoport (Hobbits Glen)
Executive Director Al Hagen (Lakewood)
Board Members Frank Buddle (Montgomery Village), Allen
Eckel (Cambridge), George Fisher (Beaver
Creek), John McManus (Bethesda), Wally
Sager (Potomac Valley), Gil Williams
(Univ. of Maryland), Bill Woolston (Hunt
Valley)
Editor MISGAgam Lee Shimberg (Greencastle)
Communications Consultant: Joe Gam-
batese (Kenwood)

1982

President Bill Woolston (Hunt Valley)
Vice-President George Fisher* Wally Sager (Potomac Val-
ley)
Secretary Sid Rapoport (Hobbits Glen)
Treasurer Lee Shimberg (Greencastle)
Directors and Members Division 1 Ed Maguire (Caroline), Sam Bee-
bee (Caroline)
Division 2 Mel Gesell (Piney Branch), Ted

* George Fisher died, Wally Sager was elected Vice-President and Ted Hayward was appointed Member of the Board to maintain two votes for Division 2.

	Hayward (Eaglehead)
	Division 3 Herb Hudson (Indian Spring)
	Division 4 Mike Deoudes (Potomac Valley)
Hold-over Members	Allen Eckel (Cambridge), Ed Schmidt (Talbot), Dave Watson (Argyle), Gil Williams (Univ. of Maryland)
President Emeritus	Al Hagen (Lakewood)
Editor MISGAgam	Lee Shimberg (Greencastle)

1983

President	Herb Hudson (Indian Spring)
Vice-President	Sam Hastings (Argyle)
Secretary	Ted Hayward (Eaglehead)
Treasurer	Sid Rapoport (Hobbits Glen)
Directors and Members	Division 1 Ed Maguire (Caroline), Sam Beebe (Caroline)
	Division 2 Mel Gesell (Piney Branch), Hal Renegar (Holly Hills)
	Division 3 Herb Hudson (Indian Spring), Harry Bryan (Crofton)
	Division 4 Sam Hastings (Argyle), Duane Swindle (Montgomery Village)
President Emeritus	Al Hagen
Editor MISGAgam	Bill Woolston (Hunt Valley)

1984

President	Herb Hudson (Indian Spring)
Vice-President	Sam Hastings (Argyle)
Secretary	Ted Hayward (Eaglehead)
Treasurer	Sid Rapoport (Hobbits Glen)
Directors and Members	Division 1 Ed Maguire (Caroline), Sam Beebe (Caroline)
	Division 2 Don Falconer (Eaglehead), Hal Renegar (Holly Hills)
	Division 3 Herb Hudson (Indian Spring), Harry Bryan (Crofton)
	Division 4 Sam Hastings (Argyle), Duane Swindle (Montgomery Village)
President Emeritus	Al Hagen
Editor MISGAgam	Bill Woolston (Hunt Valley)

1985

President	Sam Hastings (Argyle)
Vice-President	Gil Williams (Univ. of Maryland)
Secretary	Ted Hayward (Eaglehead)

Treasurer	Sid Rapoport (Hobbits Glen)
Directors and Members	Division 1 Francis McKee (Elks), Sam Beebe (Caroline)
	Division 2 Don Falconer (Eaglehead), Hal Renegar (Holly Hills)
	Division 3 Gil Williams (Univ. of Maryland), Harry Bryan (Crofton)
	Division 4 Sam Hastings (Argyle), Dick Redinger (Bethesda)
President Emeritus	Al Hagen
Editor MISGAgam	Bill Woolston (Hunt Valley)

1986

President	Gil Williams (Univ. of Maryland)
Vice-President	Bill Ransdell (Green Hill)
Secretary	Ted Hayward (Eaglehead)
Treasurer	Sid Rapoport (Hobbits Glen)
Directors and Members	Division 1 Francis McKee (Elks), Bill Ransdell (Green Hill)
	Division 2 Don Falconer (Eaglehead), Bob Fuchs (Holly Hills)
	Division 3 Gil Williams (Univ. of Maryland), Ernie Christensen (Navy)
	Division 4 Ray Keany (Kenwood), Dick Redinger (Bethesda)
President Emeritus	Al Hagen
Editor MISGAgam	Bill Woolston (Hunt Valley)
Committee Chairmen:	
Policy and Planning	Harry Bryan (Crofton)
Associates	Dick Quinn (Univ. Of Maryland)
Audit	Ed Abel (Indian Spring)
Tournament	Doug Moats (Montgomery)
Mailing	Sam Wolk (Univ. Of Maryland)

1987

President	Francis McKee (Elks)
Vice-President	Bob Fuchs (Holly Hills)
Secretary	Jack Grover (Ocean City)
Treasurer	Sid Rapoport (Hobbits Glen)
Directors and Members	Division 1 Francis McKee (Elks), Bill Ransdell (Green Hill)
	Division 2 Bill Woolston (Hunt Valley), Bob Fuchs (Holly Hills)
	Division 3 Gil Williams (Univ. of Maryland), Ernie Christensen (Navy)

	Division 4 Ray Keany (Kenwood), Dick Redinger (Bethesda)
President Emeritus	Al Hagen
Editor MISGAgam	Harry Bryan (Crofton)
Committee Chairmen:	
Policy and Planning	Ed Maguire (Caroline)
Associates	Dick Quinn (Univ. Of Maryland)
Audit	Ed Abel (Indian Spring)
Tournament	Doug Moats (Montgomery)
Mailing	Sam Wolk (Univ. Of Maryland)
Historian	Claude Widerman (Montgomery)

1988

President	Bob Fuchs (Holly Hills)
Vice-President	Bill Hulihan (Montgomery Village)
Secretary	Ken Daly (Holly Hills)
Treasurer	Sid Rapoport (Hobbits Glen)
Directors and Members	Division 1 John Turner (Green Hill), Bill Ransdell (Green Hill)
	Division 2 Bill Woolston (Hunt Valley), Bob Fuchs (Holly Hills)
	Division 3 Marks Jaillite (Brooke Manor), Ernie Christensen (Navy)
	Division 4 Ray Keany (Kenwood), Bill Hulihan (Montgomery Village)
	Al Hagen
	Harry Bryan (Crofton)

President Emeritus	
Editor MISGAgam	
Committee Chairmen:	
Policy and Planning	Don Falconer (Eaglehead)
Associates	Dick Quinn (Univ. Of Maryland)
Audit	Ed Abel (Indian Spring)
Tournament	Doug Moats (Montgomery)
Mailing	Ralph Laycock (Leisure World)
Historian	Claude Widerman (Montgomery)

1989

President	Bill Hulihan (Montgomery Village)
Vice-President	John Turner (Green Hill)
Secretary	Bud Marshall (Lakewood)
Treasurer	Sid Rapoport (Hobbits Glen)
Directors and Members	Division 1 John Turner (Green Hill), Charlie Szymanski (Sussex Pines)
	Division 2 Bill Woolston (Hunt Valley), Fred Shaffer (V.F.W.)

	Division 3 Marks Jaillite (Brooke Manor), Merle Shumaker (Crofton)
	Division 4 Claude Widerman (Montgomery), Bill Hulihan (Montgomery Village)
President Emeritus	Al Hagen
Editor MISGAgram	Ken Pierson (Hobbits Glen)
Committee Chairmen:	
Policy and Planning	Don Falconer (Eaglehead)
Associates	Roy Gauzza (Montgomery Village)
Audit	Ed Abel (Indian Spring)
Tournament	Doug Moats (Montgomery)
Mailing	Ralph Laycock (Leisure World)
Historian	Ray Keany (Kenwood)
General Counsel	Joe Malinowski (Montgomery Village)

1990

President	John Turner (Green Hill)
Vice-President	Merle Shumaker (Crofton)
Secretary	Bud Marshall (Lakewood)
Treasurer	Sid Rapoport (Hobbits Glen)
Directors and Members	Division 1 John Turner (Green Hill), Charlie Szymanski (Sussex Pines)
	Division 2 Dick Allchin (Hunt Valley), Fred Shaffer (V.F.W.)
	Division 3 Marks Jaillite (Brooke Manor), Merle Shumaker (Crofton)
	Division 4 Claude Widerman (Montgomery), Bill Hulihan (Montgomery Village)
	Al Hagen
	Ken Pierson (Hobbits Glen)

President Emeritus	Bill Hulihan (Montgomery Village)
Editor MISGAgram	Roy Gauzza (Montgomery Village)
Committee Chairmen:	Ed Abel (Indian Spring)
Policy and Planning	George Lipscomb (Brooke Manor)
Associates	Ralph Laycock (Leisure World)
Audit	Ray Keany (Kenwood)
Tournament	Joe Malinowski (Montgomery Village)
Mailing	
Historian	
General Counsel	

1991

President	Merle Shumaker (Crofton)
Vice-President	Fred Shaffer (V.F.W.)
Secretary	Bud Marshall (Lakewood)
Treasurer	Sid Rapoport (Hobbits Glen)
Directors and Members	Division 1 Dick Bevan (Nassawango),

	Charlie Szymanski (Sussex Pines)
	Division 2 Dick Allchin (Hunt Valley), Fred Shaffer (V.F.W.)
	Division 3 Bob Ludwig (Univ. Of Maryland), Merle Shumaker (Crofton)
	Division 4 Claude Widerman (Montgomery), Doug Moats (Montgomery)
President Emeritus	Al Hagen
Editor MISGAgam	Ken Pierson (Hobbits Glen)
Committee Chairmen:	
Policy and Planning	Ted Branthover (Montgomery Village)
Associates	Roy Gauzza (Montgomery Village)
Audit	Ed Abel (Indian Spring)
Tournament	George Lipscomb (Brooke Manor)
Mailing	Ralph Laycock (Leisure World)
Historian	Ray Keany (Kenwood)
General Counsel	Joe Malinowski (Montgomery Village)

1992

President	Fred Shaffer (V.F.W.)
Vice-President	Dick Bevan (Nassawango)
Secretary	Bud Marshall (Lakewood)
Treasurer	Sid Rapoport (Hobbits Glen)
Directors and Members	Division 1 Dick Bevan (Nassawango), Charlie Szymanski (Sussex Pines)
	Division 2 Dick Allchin (Hunt Valley), Fred Shaffer (V.F.W.)
	Division 3 Bob Ludwig (Univ. Of Maryland), Merle Shumaker (Crofton)
	Division 4 Claude Widerman and Doug Moats (Montgomery)

President Emeritus	Al Hagen
Editor MISGAgam	Ken Pierson (Hobbits Glen)
Committee Chairmen:	
Policy and Planning	Ted Branthover (Montgomery Village)
Associates	Roy Gauzza (Montgomery Village)
Audit	Ed Abel (Indian Spring)
Tournament	George Lipscomb (Brooke Manor)
Mailing	Ralph Laycock (Leisure World)
Historian	Ray Keany (Kenwood)
General Counsel	Joe Malinowski (Montgomery Village)

1993

President	Dick Bevan (Nassawango)
Vice-President	Bud Marshall (Lakewood)

Secretary	Ben Smith (Nassawango)
Treasurer	Harry Breitbach (Crofton)
Directors and Members	Division 1 Dick Bevan (Nassawango), Otis Jefferson (Sussex Pines)
	Division 2 Dick Allchin (Hunt Valley), George Meyer (Holly Hills)
	Division 3 Bob Ludwig (Univ. Of Maryland), Brad Frapart (Woodmore)
	Division 4 Bud Marshall (Lakewood), Doug Moats (Montgomery)
President Emeritus	Al Hagen
Editor MISGAgam	Ken Pierson (Hobbits Glen)
Committee Chairmen:	
Policy and Planning	Ted Branthover (Montgomery Village)
Associates	Roy Gauzza (Montgomery Village)
Audit	Ed Abel (Indian Spring)
Tournament	George Lipscomb (Brooke Manor)
Mailing	Ralph Laycock (Leisure World)
Historian	Ray Keany (Kenwood)
General Counsel	Joe Malinowski (Montgomery Village)

1994

President	Doug Moats (Montgomery)
Vice-President	Bud Marshall (Lakewood)
Secretary	Chuck Cissel (Montgomery) & Ted Walsh (Montgomery)
Treasurer	Harry Breitbach (Crofton)
Directors and Members	Division 1 Dick Bevan (Nassawango), Otis Jefferson (Sussex Pines)
	Division 2 Frank Page (Rolling Road), George Meyer (Holly Hills)
	Division 3 Bob Ludwig (Univ. Of Maryland), Brad Frapart (Woodmore)
	Division 4 Bud Marshall (Lakewood), Doug Moats (Montgomery)
President Emeritus	Al Hagen
Editor MISGAgam	Merle Shumaker (Crofton)
Committee Chairmen:	
Policy and Planning	Ted Branthover (Montgomery Village)
Associates	Roy Gauzza (Montgomery Village)
Audit	James Lee (Montgomery)
Tournament	George Lipscomb (Brooke Manor)
Mailing	Dave Stevenson (Crofton)
Historian	Ray Keany (Kenwood)
General Counsel	Joe Malinowski (Montgomery Village)

1995

President	Otis Jefferson (Sussex Pines)
Vice-President	George Meyer (Holly Hills)
Secretary	Paul Desmond (Ocean Pines)
Treasurer	Harry Breitbach (Crofton)
Directors and Assistant Directors	Division 1 Duke Rowdon (Prospect Bay), Otis Jefferson (Sussex Pines) Division 2 Frank Page (Rolling Road), George Meyer (Holly Hills) Division 3 George Shenk Sr. (Navy), Brad Frapart (Woodmore) Division 4 Wayland Coston (Kenwood), C. J. Myers (Manor)
President Emeritus	Al Hagen
Editor MISGAGram	Merle Shumaker (Crofton)
Committee Chairmen:	
Policy and Planning	Ted Branthover (Montgomery Village)
Associates	Roy Gauzza (Montgomery Village)
Audit	James Lee (Montgomery)
Tournament	George Lipscomb (Brooke Manor)
Mailing	Dave Stevenson (Crofton)
Historian	Ray Keany (Kenwood)
General Counsel	Joe Malinowski (Montgomery Village)

APPENDIX C

MISGA Annual Tournaments, Host Clubs and Champions

Year	Host Club(s)	Winning Club	Champions
1976	Potomac Valley	Eaglehead	Bowers, Brandenburg, Falconer, McCotter, McCherry, A. Trout, H. Trout and Thompson
1977	* Lakewood & Potomac Valley	Manor	Brook, Furrows, Christsmith, Deal, Dobrolowski, Doyle, Geibel and King
1978	* Manor & Montgomery Village	Chartwell	Lynch, Makowski, Rodgers and Vaughn
1979	* Kenwood & Montgomery Village	Greencastle	Flaherty, Graybar, Mehaffey and Wheeler
1980	Argyle	Sparrows Point	Bucharewicz and Chriswold, Covell and Spann
1981	Lakewood	Caroline	Bebee and Hastings
1982	Talbot	Ocean City	McCallister and Taylor
1983	Indian Spring	Greencastle	Fields and Richards
1984	Sparrows Point	Sparrows Point	Adams and Valentine
1985	Argyle	Sparrows Point	Buchanan and Valentine
1986	Tantallon	Tantallon	Licitra and Frank
1987	Green Hill	Sparrows Point	Speece and Spann
1988	Lakewood	Hunt Valley	Trimble and Vaughn
1989	Piney Branch	Holly Hills	Best and Daly
1990	Crofton	Ocean Pines	Weller and Gallagher
1991	Argyle	Elks	Dailey and Logan
1992	Chartwell	Harbourtowne	Marshall and Cohee
1993	Rolling Road	Elks	Dailey and Logan
		Bowie	Brisko and Winkis
1994	Sussex Pines	Cambridge	Eckel and Alexander
1995	Leisure World	Kenwood	Eliopolo and McBride

* Denotes Host Club for the Annual Banquet.

APPENDIX D

Member Clubs and Dates Joined MISGA

Andrews AFB *	1985	Maple Dale	1995
Argyle	1977	Marlboro(now Marlborough)	1981
Beaver Creek	1977	Martingham *	1981
Bethesda	1976	Montgomery	1976
Bowie	1985	Montgomery Village	1976
Brooke Manor *	1976	Nassawango	1977
Cambridge	1977	Norbeck	1984
Caroline	1977	Nutter's Crossing	1992
Chartwell	1977	Ocean City	1979
Chester River	1981	Ocean Pines	1980
Cripple Creek	1995	Patuxent Greens	1992
Congressional *	1976	Piney Branch	1980
Crofton	1980	Potomac Valley *	1976
Eagle Creek	1995	Prince Georges (now Woodmore) *	1977
Eaglehead (now Westwinds)	1976	Prospect Bay	1983
Eastern Shore	1987	Quail Valley	1993
Elks	1977	Rolling Road	1979
Fountain Head *	1978	Seaford	1978
Glade Valley	1991	Shawnee	1979
Greencastle *		Sparrows Point	1979
Green Hill	1979	Sussex Pines	1983
Harbourtowne	1977	Talbot	1977
Hobbits Glen	1987	Tantallon (now Potomac)	1977
Holly Hills	1977	University of Maryland	1979
Hunt Valley	1979	U.S. Naval Academy	1984
Indian Spring *	1977	V.F.W. (Frederick)	1977
Kenwood	1976	Wakefield Valley	1981
Lakewood	1976	Walden	1995
Leisure World (was Rossmoor)	1976	Washingtonian *	1977
Manor	1976	Woodmont *	1977

* No longer in MISGA

APPENDIX E

Date and Location of MISGA Spring Fling

1977	Myrtle Beach, SC	Week of March 27
1978	Myrtle Beach, SC	March 27-April 2
1979	Myrtle Beach, SC	April 1-7
1980	Callaway Gardens, GA	Feb. 24-March 1
1981	Myrtle Beach, SC	April 5-11
1982	Nassawango & Ocean City	May 5-6
1983	Talbot CC & Prospect Bay CC	May 2-3
1984	Green Hill Y&CC & Nassawango CC	May 10-11
1985	Green Hill Y&CC & Nassawango CC	May 9-10
1986	Green Hill Y&CC & Nassawango CC	May 8-9
1987	Green Hill Y&CC & Nassawango CC	May 7-8
1988	Green Hill Y&CC & Nassawango CC	May 5-6
1989	Green Hill Y&CC & Nassawango CC	May 11-12
1990	Green Hill Y&CC & Nassawango CC	May 10-11
1991	Green Hill Y&CC & Nassawango CC	May 23-24
1992	Green Hill Y&CC & Nassawango CC	May 21-22
1993	Ocean City G&YC	May 20-21
1994	Ocean City G&YC	May 18-19
1995	Green Hill Y&CC & Nassawango CC	May 18-19

APPENDIX F

MISGA Annual meetings of Club Representatives

Year	Host Club	Date
1976	Potomac Valley CC	September 24
1977	Rossmoor CC	October 21
1978	Kenwood G&CC	October 31
1979	Hunt Valley GC	October 25
1980	Ocean Pines GC	October 17
1981	Prince Georges CC	April 28
1982	Caroline CC	October 4
1983	Prince Georges CC	April 26
1984	Caroline CC	April 30
1985	Prospect Bay CC	April 9
1986	Prospect Bay CC	April 16
1987	Caroline CC	April 28
1988	Caroline CC	April 26
1989	Chester River CC	April 17
1990	Chester River CC	April 23
1991	Chester River CC	April 29
1992	Chester River CC	April 27
1993	Talbot CC	April 19
1994	Prospect Bay CC	April 25
1995	Cambridge CC	April 24

APPENDIX G

Guidelines for MISGA Club Representatives (Prepared by the Policy and Planning Committee)

1. Note: These guidelines are suggestions to help you conduct the business of club representative and are not to be considered as hard and fast rules.
2. Mixer dates should be established with “home” and “away” dates, mutually acceptable to both clubs, as early as possible to avoid conflicts with other club dates and activities.
3. The Mixer sign-up sheet should be up long enough (e.g., 2 weeks prior to date of Mixer) to enable all of your MISGA associates to sign up. If your club has an active telephone committee, you might notify your MISGA associates when the sign-up sheet is posted.
4. Host representatives of clubs that limit the number of guests that may play in a mixer should inform the visiting representative well in advance before a sign-up sheet is posted.
5. Clubs require all players in MISGA Mixers to pay for a package which includes prize money, cart and lunch. The visiting representative should be notified in advance the cost so he can post this information with the sign-up sheet.
6. In any and all it is desirable to have as many players as possible join in the lunch period to: 1) participate in the good fellowship of the Mixer and 2) support the host club. The club supports MISGA by waiving green fees and in other ways and we should support them.
7. If your Mixer is “away”, provide the host representative with the names and handicap indices of the players from your club before the Mixer. One method being used is to

supply the host representatives with alphabetical lists of all associates when the monthly list of handicaps is printed. Then a few days later, before the Mixer, the visiting representative can call in the names of those who have signed up. This avoids misspellings of names and reduces telephone time.

8. All representatives should impress on all their associates the problem caused by “no shows” and “walk-ons”. Be helpful to the host representative by notifying him promptly of additions and/or deletions.
9. It is standard procedure for the host club to provide coffee and doughnuts before tee-off time.
10. If the club or caterer needs to know in advance the number of players staying for lunch, the head count should be taken when the players sign in before they tee off.
11. It is the policy of MISGA to collect a small fee from each player for the prize money. The host representative determines how the prize money will be divided and awarded. It is suggested that the prize money be distributed as widely as possible. In any event, whatever method is used to distribute the prize money, it should be done as promptly as possible.
12. A representative may disqualify cards not turned in within five hours after the start of play. If a representative plans to enforce this rule, he should call it to the players’ attention before play starts. Even then, circumstances causing slow play should be checked and considered carefully.
13. Every representative should be sure all of his associates are in the club handicap system and have a current USGA handicap. He should also be sure they are current members of MISGA.
14. Where arrangements permit, each cart should be shared by a host club player and a visiting club player.

15. The format of play is determined by the host club. Best ball, four ball, best two balls of foursome, etc. Play may be with full handicap, 90% with two best balls of a foursome, or 80% with one best ball of a foursome.
16. Having the score cards marked with the handicaps of players ready in advance and having names of players and starting hole posted on carts will speed up the organization of the start of play.
17. When the host representative feels it would be helpful, a map showing the best route to the host club may be provided to the visiting club.
18. Every representative can improve his program and make his job easier with the use of an active telephone committee. Seniors like to be called to be reminded of dates and to be encouraged to participate in activities. The fact that different clubs have different senior days makes a telephone reminder even more appropriate.

APPENDIX H

MISGA Out-of-State Events

Site	Years	MISGAgram Ref. #
Santee	95	42
Seabrook	93 - 95	36, 39, 42
Sea Trail	89 – 95	28, 29, 30, 32, 34, 36, 39, 42
Cape Coral	90-95	31, 37, 39
Grenelefe	88	
Pinehurst	87	26
Jekyll Island	86 - 95	21, 22, 26, 28, 29, 30, 32, 34, 36, 39, 42
Scotland	86	18, 19
Fort Myers	85 – 87, 89	17, 18, 19, 20, 21, 22
Guadalajara	84-85	14, 15, 16, 17, 18
Bahamas	82	
Foxfire	81, 83-88, 94	9, 13, 14, 15, 16, 17, 18, 19, 20, 21, 22, 26
Callaway Garden	80	
Myrtle Beach	77-79, 81	1, 2, 3, 6

ACKNOWLEDGMENTS

Publishing this 20-year History of MISGA has been a truly memorable experience for me. It was a labor of love to begin with, and the enthusiastic support given by so many gifted and knowledgeable people was heart warming. My contact with MISGA members, at all levels, evoked a flood of wonderful memories. I received an extensive education in publishing – in the arts of writing, graphic presentation, printing and binding – from talented professionals in these fields. I have been repaid beyond measure for my efforts.

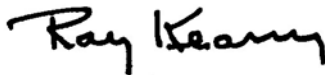
MISGA members at all levels, Directors, Committee Members, Club Reps and individual members, were uniformly and enthusiastically supportive. Merle Shumaker, Editor, has expressed his gratitude to them. I add my sincere thanks to his.

A number of my fellow-members of Kenwood G&CC helped to lighten the load for me in many, many ways. They formed a sort of “kitchen cabinet.” They are: Bill Ahlfeld, Dick O’Melia, Jim Reber, Jim Snyder, Jim Sites, Rudy Arkin, Bob McMinn and Wayland Coston. They have my deepest gratitude.

Two MISGA members, Ray Tyler and George Shenk, are each in the printing business and run their own plants. They explained the steps necessary to transform a manuscript into a printed book and pointed out many pitfalls along the way. They saved us from many false starts and mistakes, and I am indebted to them.

There were three people who are not MISGA members but who played essential roles in creating this history. The first of these is Margaret Heimbold, publisher of Metro Golf Magazine. She outlined all the steps we would have to take and then formulated a timetable to assure we would meet our publication deadline. Another talented young lady is Lynne Komai, daughter of MISGA member Ted Branthover. She runs her own advertising and graphics organization. Lynne designed our centerfold and advised us in matters of visual style. Tom Shaffer son of Fred Shaffer (past MISGA president, VFW) put our final manuscript in computerized photo-ready format.

Also, I cannot close without a word to so many, including Duke Rowdon, Prospect Bay Club—To All—Thank you, Good Luck, Good Golf and God Bless.



Ray Keany
Historian